

Natural Values Atlas Report

Authoritative, comprehensive information on Tasmania's natural values.

Report number: 41692

Reference: Anchor Mine Plan

Requested For: Russell Fulton

Timestamp: 06:00:58 PM Monday 07 March 2011

Threatened Flora: buffers 500m and 5000m

Threatened Fauna: buffers 500m and 5000m

Conservation Significance Flora: buffers 500m and 5000m

Conservation Significance Fauna: buffers 500m and 5000m

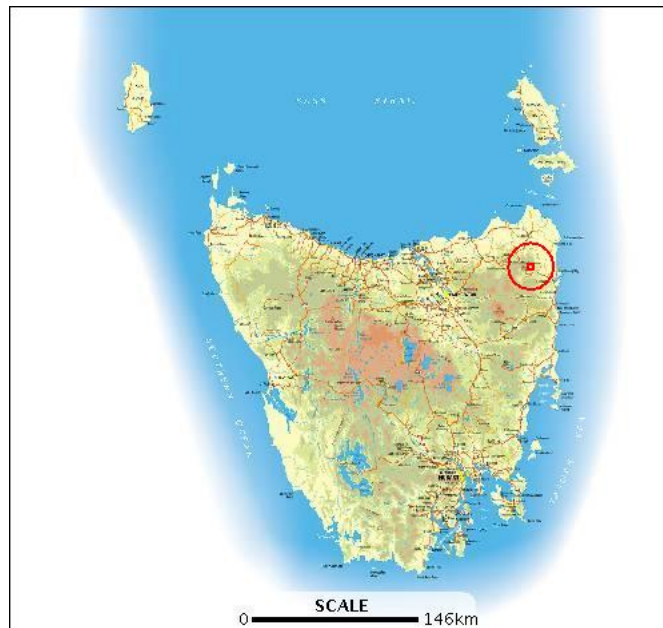
Weeds: buffers 500m and 5000m

TasVeg: buffer 1000m

Threatened Non-Forest: buffer 1000m

Geoconservation: buffer 1000m

Tasmanian Reserve Estate: buffer 1000m



The centroid for this query GDA94 584973,5435419 falls within:

1:25000 Map: 5843 BLUE TIER

Property: 2542305 LEHNERS RIDGE ROAD,
LOTTAH TAS 7216

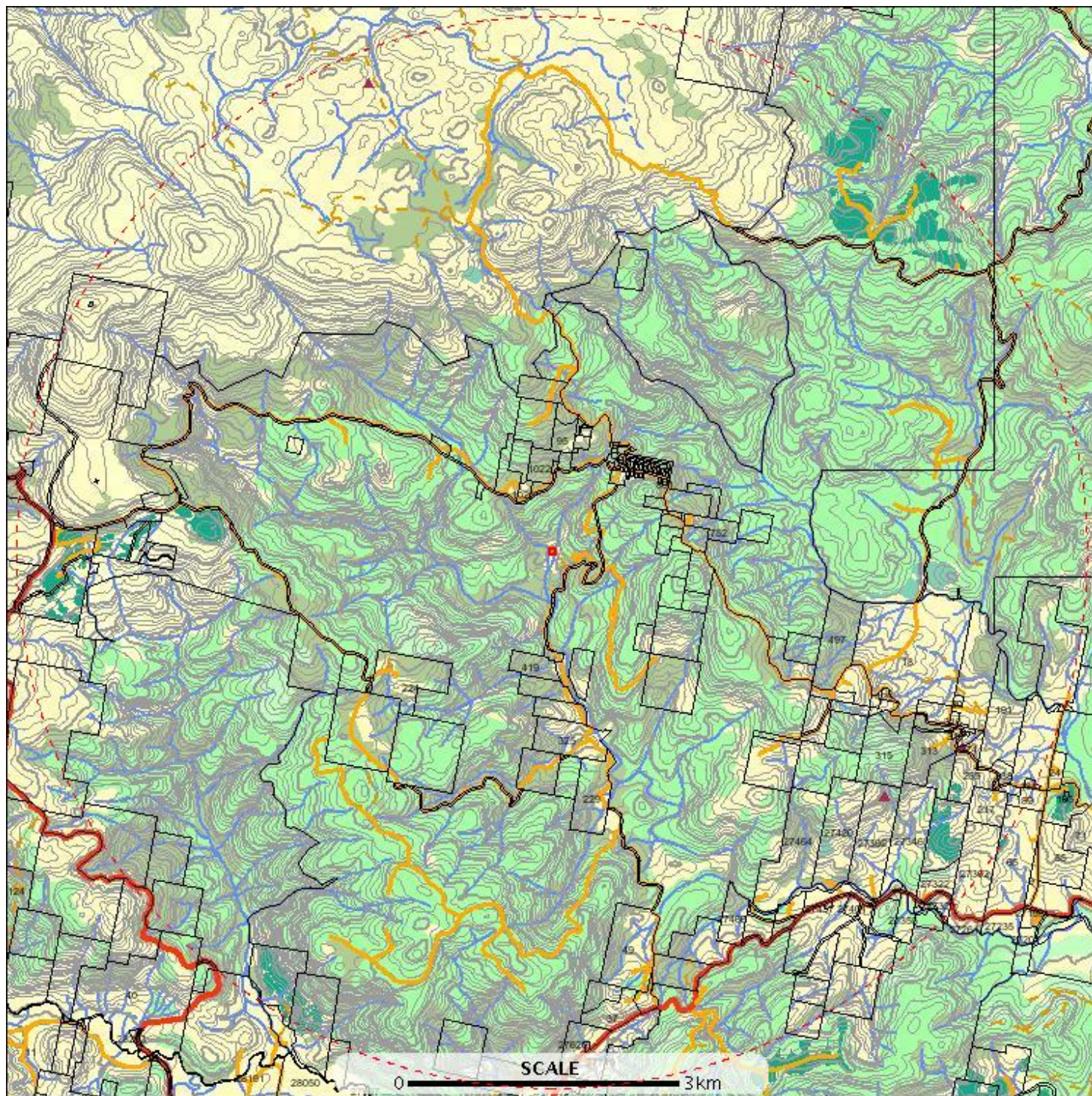
Threatened flora within 500 metres

*** No threatened flora found within 500 metres. ***

Threatened flora within 5000 metres

E: 579873
N: 5440519

E: 590072
N: 5440519



E: 579873
N: 5430319

E: 590072
N: 5430319

Threatened flora within 5000 metres

	Threatened Flora Observations		Tall Native Eucalypt Forest		Arterial Road
	Place Names		Low Native Eucalypt Forest		Feeder
	Relief Names		Non-Forest		Access Road
	Major Rivers		Contours		Forestry
	Other Rivers		Index		Vehicular Track
	Water Body		Intermediate		Cadastral Parcels
	Estuaries		Depression Index		
	Sea		Depression Intermediate		
	Forest Groups		Land		
	Hardwood Plantation		Road Centrelines		
	Softwood Plantation		National/State Highway		
	Other Native Forest		Major Arterial Road		
(cont)		(cont)			

Threatened flora within 5000 metres

ID	Species	Common Name	SS	NS	Observers	Date	Obs Type	Location (GDA94)
987066	Bunodophoron notatum		e		A Simson (2776)	01-Jan-1875		588085,5433126 +/- 10000m.
929239	Hierochloe rariflora	cane holygrass	r		A Simson (2776)	01-Nov-1876		588085,5433126 +/- 1500m.
230597	Plantago debilis	shade plantain	r		A. Simson (3720)	Apr-1876		588812,5433583 +/- 2000m.
149053	Scleranthus brockiei	mountain knawel	r		Karen Johnson (1435)	14-Mar-1996?		583262,5439783 +/- 100m.
929404	Senecio squarrosus	leafy fireweed	r		A Simson (2776)	01-Dec-1876		588085,5433126 +/- 1500m.
230610	Senecio velleioides	forest groundsel	r		- Unknown (21598)	01-Jan-1600?		588812,5433583 +/- 2000m.

For more information about threatened species, please contact the Manager, Threatened Species Section.

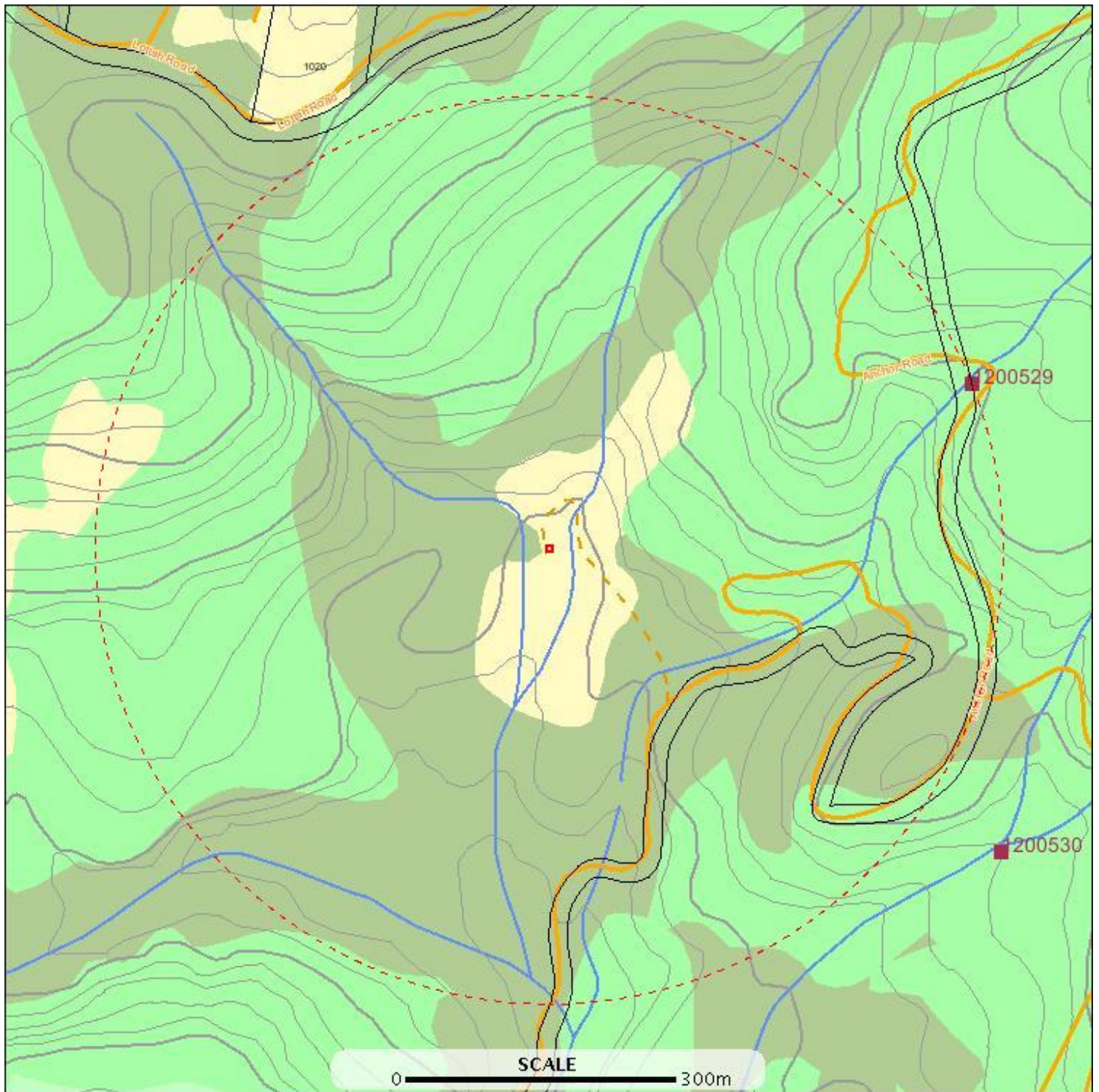
Telephone: (03) 6233 8759

Email: ThreatenedSpecies.Enquiries@dpipwe.tas.gov.au

Threatened fauna within 500 metres

E: 584373
N: 5436019

E: 585572
N: 5436019



E: 584373
N: 5434819

E: 585572
N: 5434819

Threatened fauna within 500 metres



Threatened fauna within 500 metres

Threatened fauna within 500 metres (based on Habitat Mapping)

Species	Common Name	SS	NS	Potential	Known	Core
<i>Aquila audax subsp. fleayi</i>	wedge-tailed eagle	e	EN	1	0	0
<i>Aquila audax</i>	wedge-tailed eagle	pe	PEN	1	0	0
<i>Perameles gunnii</i>	eastern barred bandicoot		VU	1	0	0
<i>Hoplogonus simsoni</i>	simson's stag beetle	v	VU	1	0	0
<i>Lathamus discolor</i>	swift parrot	e	EN	1	0	0
<i>Tyto novaehollandiae</i>	masked owl	pe	PVU	1	0	0
<i>Litoria raniformis</i>	green and golden frog	v	VU	1	0	0
<i>Accipiter novaehollandiae</i>	grey goshawk	e		1	0	1
<i>Haliaeetus leucogaster</i>	white-bellied sea-eagle	v		1	0	0

For more information about threatened species, please contact the Manager, Threatened Species Section.

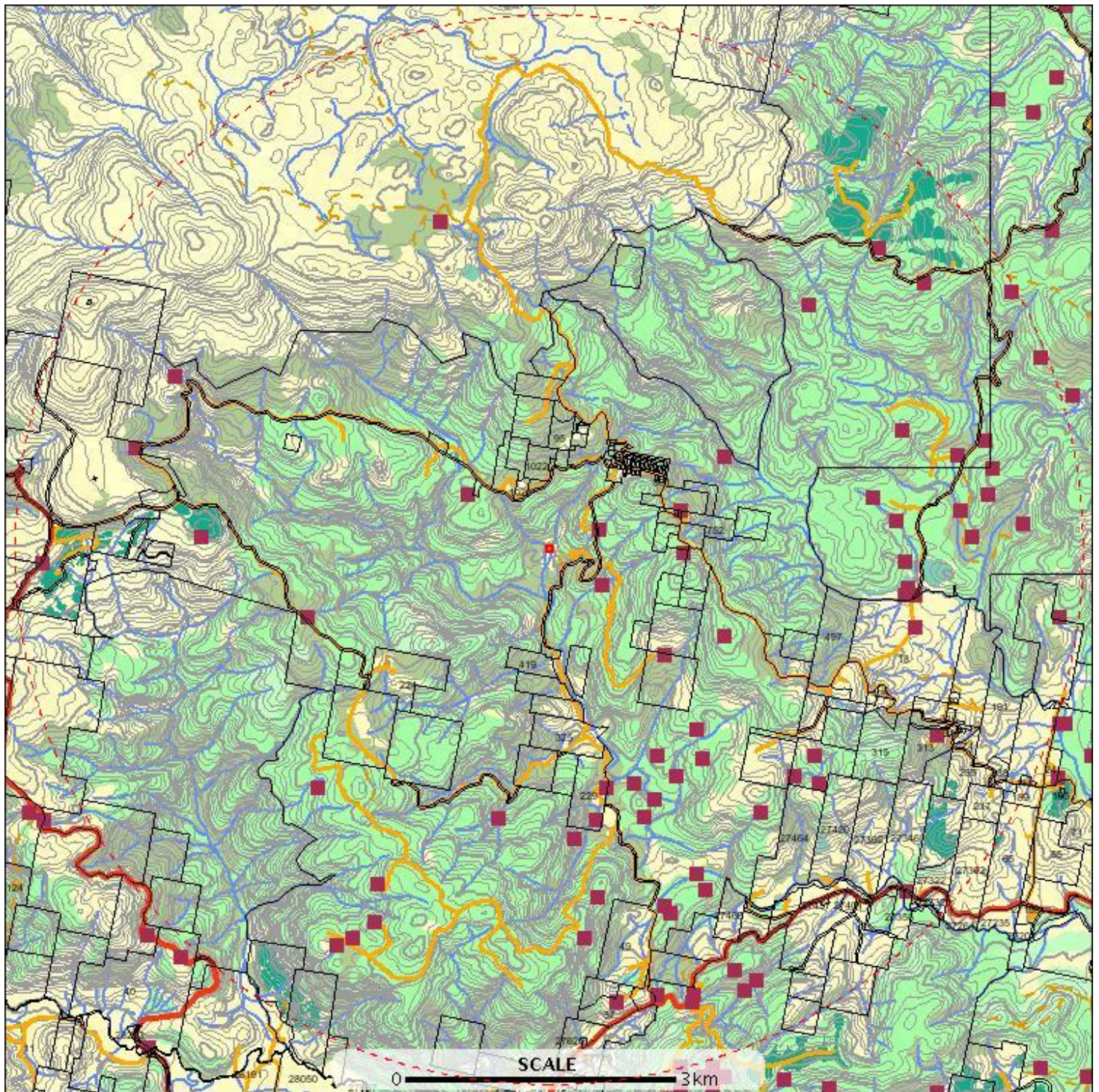
Telephone: (03) 6233 8759

Email: ThreatenedSpecies.Enquiries@dpipwe.tas.gov.au

Threatened fauna within 5000 metres

E: 579873
N: 5440519

E: 590072
N: 5440519



E: 579873
N: 5430319

E: 590072
N: 5430319

Threatened fauna within 5000 metres

	Threatened Fauna Observations		Tall Native Eucalypt Forest		Arterial Road
	Place Names		Low Native Eucalypt Forest		Feeder
	Relief Names		Non-Forest		Access Road
	Major Rivers		Contours		Forestry
	Other Rivers		Index		Vehicular Track
	Water Body		Intermediate		Cadastral Parcels
	Estuaries		Depression Index		
	Sea		Depression Intermediate		
	Forest Groups		Land		
	Hardwood Plantation		Road Centrelines		
	Softwood Plantation		National/State Highway		
	Other Native Forest		Major Arterial Road		
(cont)		(cont)			

Threatened fauna within 5000 metres

ID	Species	Common Name	SS	NS	Observers	Date	Obs Type	Location (GDA94)
878186	Accipiter novaehollandiae	grey goshawk	e		Darryel Binns (6900)	11-Apr-1992?		588612,5433683 +/- 100m.
950073	Aquila audax subsp. fleayi	wedge-tailed eagle	e	EN	Willem Mulder (7228)	20-Jul-2006	nest	585207,5432702 +/- 0m.
1200534	Beddomeia tasmanica	hydrobiid snail (terrys creek)	r		Karen Richards (3464)	06-Nov-2001		588797,5436298 +/- 100m.
1200529	Beddomeia tasmanica	hydrobiid snail (terrys creek)	r		Karen Richards (3464)	01-Nov-2001		585440,5435602 +/- 100m.
1200531	Beddomeia tasmanica	hydrobiid snail (terrys creek)	r		Karen Richards (3464)	03-Nov-2001		584496,5432900 +/- 100m.
1200527	Beddomeia tasmanica	hydrobiid snail (terrys creek)	r		Karen Richards (3464)	30-Oct-2001		581107,5436364 +/- 100m.
1200528	Beddomeia tasmanica	hydrobiid snail (terrys creek)	r		Karen Richards (3464)	31-Oct-2001		581466,5437038 +/- 100m.
1200532	Beddomeia tasmanica	hydrobiid snail (terrys creek)	r		Karen Richards (3464)	04-Nov-2001		586172,5433290 +/- 100m.
1200530	Beddomeia tasmanica	hydrobiid snail (terrys creek)	r		Karen Richards (3464)	02-Nov-2001		585472,5435085 +/- 100m.
1200535	Beddomeia tasmanica	hydrobiid snail (terrys creek)	r		Karen Richards (3464)	07-Nov-2001		587277,5433302 +/- 100m.
1200533	Beddomeia tasmanica	hydrobiid snail (terrys creek)	r		Karen Richards (3464)	05-Nov-2001		586363,5432379 +/- 100m.
1200536	Beddomeia tasmanica	hydrobiid snail (terrys creek)	r		Karen Richards (3464)	08-Nov-2001		585991,5431247 +/- 100m.
1154867	Dasyurus maculatus	spotted-tailed quoll	r	VU	Erin Flynn (19574)	08-Oct-2008		585765,5433232 +/- 0m.
900834	Dasyurus maculatus subsp. maculatus	spotted-tailed quoll	r	VU	Greg Hocking (7572)	25-May-1985?		586212,5435783 +/- 10000m.
741919	Dasyurus maculatus subsp. maculatus	spotted-tailed quoll	r	VU	Greg Hocking (7572)	11-Sep-1992		588325,5432222 +/- 1617m.
593608	Hoplogonus simsoni	simson's stag beetle	v	VU	- Unknown (21598)	01-Jan-1600?		583962,5438483 +/- 250m.
352548	Hoplogonus simsoni	simson's stag beetle	v	VU	Jeff Meggs (1338)	01-Jan-1996?		583962,5438483 +/- 100m.
1076273	Hoplogonus simsoni	simson's stag beetle	v	VU	Karen Richards (3464)	12-Jan-2000		582712,5434783 +/- 100m.
1076275	Hoplogonus simsoni	simson's stag beetle	v	VU	Karen Richards (3464)	12-Jan-2000		582812,5433183 +/- 100m.
1076277	Hoplogonus simsoni	simson's stag beetle	v	VU	Karen Richards (3464)	13-Jan-2000		581712,5435533 +/- 100m.
1076236	Hoplogonus simsoni	simson's stag beetle	v	VU	Jeff Meggs (1338)	06-May-1997		589762,5434783 +/- 100m.
593605	Hoplogonus simsoni	simson's stag beetle	v	VU	Jeff Meggs (1338)	05-May-1997		589762,5434783 +/- 100m.
602487	Hoplogonus simsoni	simson's stag beetle	v	VU	Jeff Meggs (1338)	02-Jun-1998		589312,5437833 +/- 100m.
602516	Hoplogonus simsoni	simson's stag beetle	v	VU	Jeff Meggs (1338)	02-Jul-1998?		589312,5437833 +/- 100m.
593649	Hoplogonus simsoni	simson's stag beetle	v	VU	Jeff Meggs (1338)	02-Jun-1998		589587,5437208 +/- 100m.
593664	Hoplogonus simsoni	simson's stag beetle	v	VU	Jeff Meggs (1338)	02-Jul-1998?		589587,5437208 +/- 100m.
845957	Hoplogonus simsoni	simson's stag beetle	v	VU	Jeff Meggs (1338)	01-Nov-1992?		588837,5435783 +/- 100m.
593715	Hoplogonus simsoni	simson's stag beetle	v	VU	- Unknown (21598)	30-Nov-1996		588837,5435783 +/- 100m.
1076241	Hoplogonus simsoni	simson's stag beetle	v	VU	Jeff Meggs (1338)	01-Dec-1996		588837,5435783 +/- 100m.
602511	Hoplogonus simsoni	simson's stag beetle	v	VU	Jeff Meggs (1338)	04-Jun-1998?		588937,5435533 +/- 100m.
593659	Hoplogonus simsoni	simson's stag beetle	v	VU	Jeff Meggs (1338)	03-Jun-1998?		589062,5436433 +/- 100m.
602577	Hoplogonus simsoni	simson's stag beetle	v	VU	- Unknown (21598)	30-Nov-1996		589087,5435933 +/- 100m.
845958	Hoplogonus simsoni	simson's stag beetle	v	VU	Jeff Meggs (1338)	01-Nov-1992?		589087,5435933 +/- 100m.
1076242	Hoplogonus simsoni	simson's stag beetle	v	VU	Jeff Meggs (1338)	01-Dec-1996		589087,5435933 +/- 100m.
602513	Hoplogonus simsoni	simson's stag beetle	v	VU	Jeff Meggs (1338)	03-Jun-1998?		589137,5436183 +/- 100m.
602518	Hoplogonus simsoni	simson's stag beetle	v	VU	Jeff Meggs (1338)	04-Jun-1998?		589412,5435658 +/- 100m.
1076248	Hoplogonus simsoni	simson's stag beetle	v	VU	Jeff Meggs (1338)	26-Nov-1996		588312,5435308 +/- 100m.
593716	Hoplogonus simsoni	simson's stag beetle	v	VU	- Unknown (21598)	25-Nov-1996		588312,5435308 +/- 100m.
1076246	Hoplogonus simsoni	simson's stag beetle	v	VU	Jeff Meggs (1338)	23-Jan-1997		588012,5435908 +/- 100m.
593604	Hoplogonus simsoni	simson's stag beetle	v	VU	- Unknown (21598)	22-Jan-1997		588012,5435908 +/- 100m.
1076247	Hoplogonus simsoni	simson's stag beetle	v	VU	Jeff Meggs (1338)	07-Feb-1997		588487,5437908 +/- 100m.
602435	Hoplogonus simsoni	simson's stag beetle	v	VU	Jeff Meggs (1338)	06-Feb-1997		588487,5437908 +/- 100m.
1076245	Hoplogonus simsoni	simson's stag beetle	v	VU	Jeff Meggs (1338)	12-Feb-1997		588287,5436533 +/- 100m.

Threatened fauna within 5000 metres

ID	Species	Common Name	SS	NS	Observers	Date	Obs Type	Location (GDA94)
602434	Hoplogonus simsoni	simson's stag beetle	v	VU	Jeff Meggs (1338)	11-Feb-1997		588287,5436533 +/- 100m.
360736	Hoplogonus simsoni	simson's stag beetle	v	VU	- Unknown (21598)	14-Nov-1996?		588412,5434983 +/- 100m.
593714	Hoplogonus simsoni	simson's stag beetle	v	VU	- Unknown (21598)	30-Nov-1996		588337,5435058 +/- 100m.
593652	Hoplogonus simsoni	simson's stag beetle	v	VU	Jeff Meggs (1338)	01-Dec-1996?		588337,5435058 +/- 100m.
1076274	Hoplogonus simsoni	simson's stag beetle	v	VU	Karen Richards (3464)	11-Jan-2000		588062,5438233 +/- 100m.
849521	Hoplogonus simsoni	simson's stag beetle	v	VU	D Cowrie (7231)	01-Jan-1972?		588412,5434683 +/- 100m.
602486	Hoplogonus simsoni	simson's stag beetle	v	VU	Jeff Meggs (1338)	16-Jul-1998?		587412,5437708 +/- 100m.
602484	Hoplogonus simsoni	simson's stag beetle	v	VU	Jeff Meggs (1338)	17-Jul-1998?		586612,5434608 +/- 100m.
1076238	Hoplogonus simsoni	simson's stag beetle	v	VU	Jeff Meggs (1338)	28-Nov-1996		586237,5435383 +/- 100m.
602451	Hoplogonus simsoni	simson's stag beetle	v	VU	- Unknown (21598)	27-Nov-1996		586237,5435383 +/- 100m.
858004	Hoplogonus simsoni	simson's stag beetle	v	VU	D Cowrie (7231)	01-Jan-1972?		586612,5436283 +/- 100m.
1076276	Hoplogonus simsoni	simson's stag beetle	v	VU	Karen Richards (3464)	04-Jan-2000		584212,5435933 +/- 100m.
593650	Hoplogonus simsoni	simson's stag beetle	v	VU	Jeff Meggs (1338)	11-Jun-1998?		587462,5433483 +/- 100m.
602489	Hoplogonus simsoni	simson's stag beetle	v	VU	Jeff Meggs (1338)	11-Jun-1998?		587512,5433233 +/- 100m.
858003	Hoplogonus simsoni	simson's stag beetle	v	VU	D Cowrie (7231)	01-Jan-1972?		585512,5433183 +/- 100m.
1084120	Hoplogonus simsoni	simson's stag beetle	v	VU	Jeff Meggs (1338)	1996		585962,5433083 +/- 100m.
593611	Hoplogonus simsoni	simson's stag beetle	v	VU	- Unknown (21598)	01-Jan-1600?		585962,5433083 +/- 200m.
602525	Hoplogonus simsoni	simson's stag beetle	v	VU	Jeff Meggs (1338)	01-Jun-1998?		585312,5431783 +/- 100m.
1084122	Hoplogonus simsoni	simson's stag beetle	v	VU	Jeff Meggs (1338)	04-Mar-2003		586112,5432008 +/- 100m.
602453	Hoplogonus simsoni	simson's stag beetle	v	VU	Jeff Meggs (1338)	06-May-1998?		586112,5432008 +/- 100m.
593609	Hoplogonus simsoni	simson's stag beetle	v	VU	- Unknown (21598)	01-Jan-1600?		586062,5432083 +/- 100m.
1084119	Hoplogonus simsoni	simson's stag beetle	v	VU	Jeff Meggs (1338)	1996		586062,5432083 +/- 100m.
602547	Hoplogonus simsoni	simson's stag beetle	v	VU	Jeff Meggs (1338)	07-May-1998?		585437,5432158 +/- 100m.
602483	Hoplogonus simsoni	simson's stag beetle	v	VU	Jeff Meggs (1338)	05-May-1998?		586437,5432233 +/- 100m.
593712	Hoplogonus simsoni	simson's stag beetle	v	VU	Jeff Meggs (1338)	06-May-1998?		585862,5432908 +/- 100m.
602485	Hoplogonus simsoni	simson's stag beetle	v	VU	Jeff Meggs (1338)	10-Jun-1998?		586962,5432958 +/- 100m.
602550	Hoplogonus simsoni	simson's stag beetle	v	VU	Jeff Meggs (1338)	02-Jun-1998?		585612,5431183 +/- 100m.
602578	Hoplogonus simsoni	simson's stag beetle	v	VU	Jeff Meggs (1338)	09-Jun-1998?		585987,5433483 +/- 100m.
602450	Hoplogonus simsoni	simson's stag beetle	v	VU	Jeff Meggs (1338)	24-Feb-1997		586062,5434433 +/- 100m.
1076237	Hoplogonus simsoni	simson's stag beetle	v	VU	Jeff Meggs (1338)	25-Feb-1997		586062,5434433 +/- 100m.
602458	Hoplogonus simsoni	simson's stag beetle	v	VU	Jeff Meggs (1338)	09-Jun-1998?		586362,5433733 +/- 100m.
602463	Hoplogonus simsoni	simson's stag beetle	v	VU	Jeff Meggs (1338)	09-Jun-1998?		586412,5433458 +/- 100m.
593610	Hoplogonus simsoni	simson's stag beetle	v	VU	- Unknown (21598)	01-Feb-1997		582987,5431708 +/- 200m.
593651	Hoplogonus simsoni	simson's stag beetle	v	VU	Jeff Meggs (1338)	04-Mar-1998?		583137,5431783 +/- 100m.
593656	Hoplogonus simsoni	simson's stag beetle	v	VU	Jeff Meggs (1338)	04-Mar-1998?		583337,5431933 +/- 100m.
602515	Hoplogonus simsoni	simson's stag beetle	v	VU	Jeff Meggs (1338)	27-May-1998?		583362,5432283 +/- 100m.
749160	Perameles gunnii	eastern barred bandicoot		VU	Greg Hocking (7572)	11-Sep-1992		580227,5435294 +/- 736m.
749213	Sarcophilus harrisii	tasmanian devil	e	EN	Greg Hocking (7572)	26-Jan-1993		586328,5431243 +/- 305m.
854571	Tasmanipatus barretti	giant velvet worm	r		Robert Mesibov (2149)	25-Aug-1983?		588312,5434983 +/- 100m.
845891	Tasmanipatus barretti	giant velvet worm	r		Robert Mesibov (2149)	23-Oct-1986?		585412,5432883 +/- 100m.
845919	Tasmanipatus barretti	giant velvet worm	r		Robert Mesibov (2149)	01-Jan-1600?		586912,5431383 +/- 100m.
845896	Tasmanipatus barretti	giant velvet worm	r		Robert Mesibov (2149)	01-Jan-1600?		586312,5431183 +/- 100m.
845917	Tasmanipatus barretti	giant velvet worm	r		Robert Mesibov (2149)	01-Jan-1600?		586712,5431483 +/- 100m.
854541	Tasmanipatus barretti	giant velvet worm	r		Robert Mesibov (2149)	01-Jan-1600?		586812,5431283 +/- 100m.
854572	Tasmanipatus barretti	giant velvet worm	r		Robert Mesibov (2149)	26-Aug-1983?		588312,5434983 +/- 100m.

Threatened fauna within 5000 metres

ID	Species	Common Name	SS	NS	Observers	Date	Obs Type	Location (GDA94)
1200807	Tasmanipatus barretti	giant velvet worm	r		Karen Richards (3464)	2000		588230,5435683 +/- 100m.
524038	Tasmanipatus barretti	giant velvet worm	r		David Horner (3455)	1998		586212,5430583 +/- 100m.

Threatened fauna within 5000 metres (based on Habitat Mapping)

Species	Common Name	SS	NS	Potential	Known	Core
Aquila audax subsp. fleayi	wedge-tailed eagle	e	EN	1	0	0
Aquila audax	wedge-tailed eagle	pe	PEN	1	0	0
Perameles gunnii	eastern barred bandicoot		VU	1	0	0
Hoplogonus simsoni	simson's stag beetle	v	VU	1	0	0
Lathamus discolor	swift parrot	e	EN	1	0	0
Tasmanipatus barretti	giant velvet worm	r		1	0	0
Galaxiella pusilla	eastern dwarf galaxias	v	VU	1	1	0
Tyto novaehollandiae	masked owl	pe	PVU	1	0	1
Litoria raniformis	green and golden frog	v	VU	1	0	0
Accipiter novaehollandiae	grey goshawk	e		1	0	1
Haliaeetus leucogaster	white-bellied sea-eagle	v		1	0	0

For more information about threatened species, please contact the Manager, Threatened Species Section.

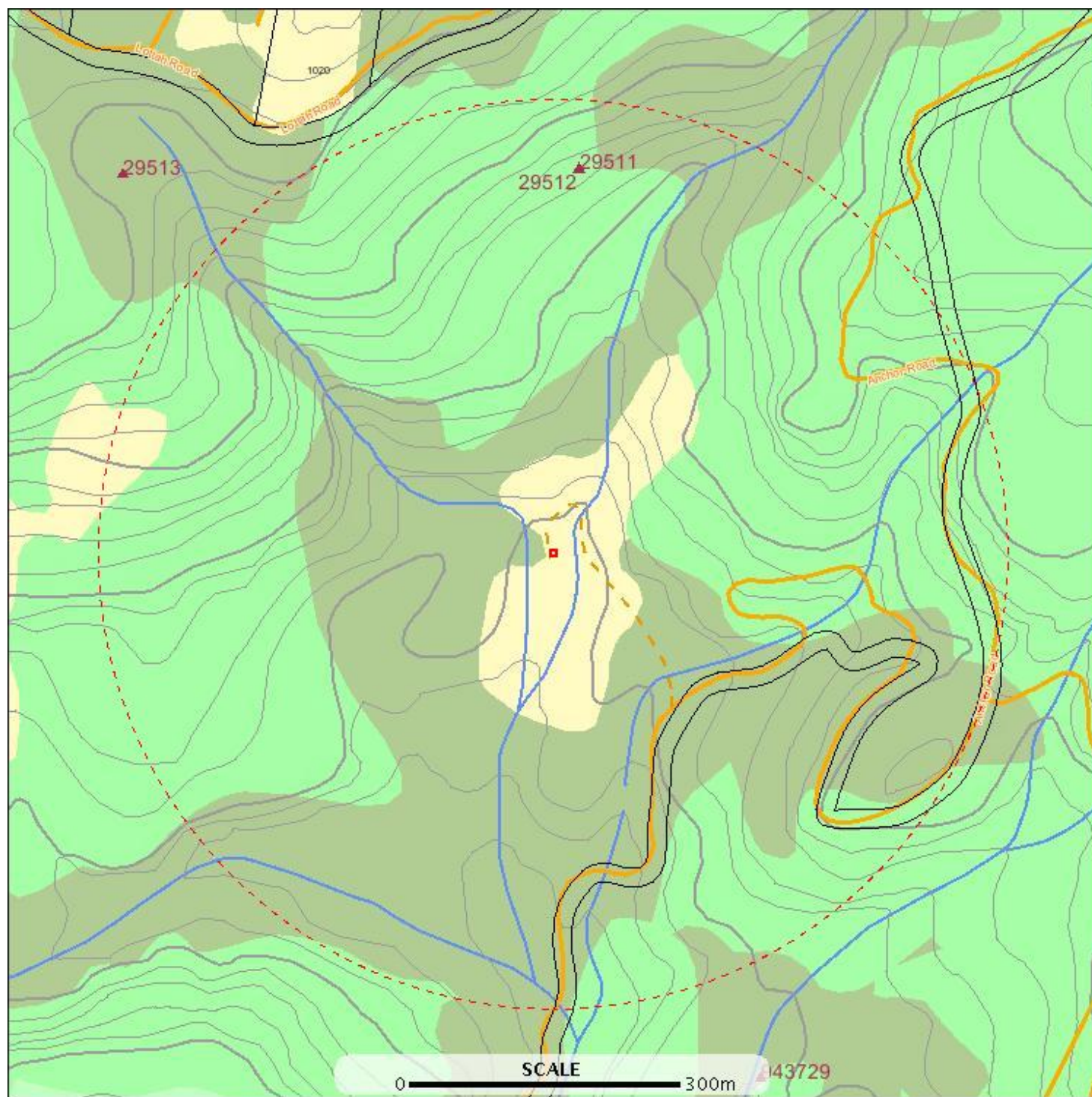
Telephone: (03) 6233 8759

Email: ThreatenedSpecies.Enquiries@dpipwe.tas.gov.au

Non-threatened flora of conservation significance within 500 m

E: 584373
N: 5436019

E: 585572
N: 5436019



E: 584373
N: 5434819

E: 585572
N: 5434819

Non-threatened flora of conservation significance within 500 m



Non-threatened flora of conservation significance within 500 m

ID	Species	Common Name	Observers	Date	Location	Bio	Sci	RFA	Nat	Int	Res	Pri	Unc	Sen	Cul
29511	Dicksonia antarctica	soft treefern	- Unknown (21598)	01-Dec-1973?	585002,5435842 +/- 100m.							y			
29512	Nothofagus cunninghamii	myrtle beech	- Unknown (21598)	01-Dec-1973?	585002,5435842 +/- 100m.							y			

For more information about flora and fauna species, please contact the Manager, Biodiversity Conservation Branch.

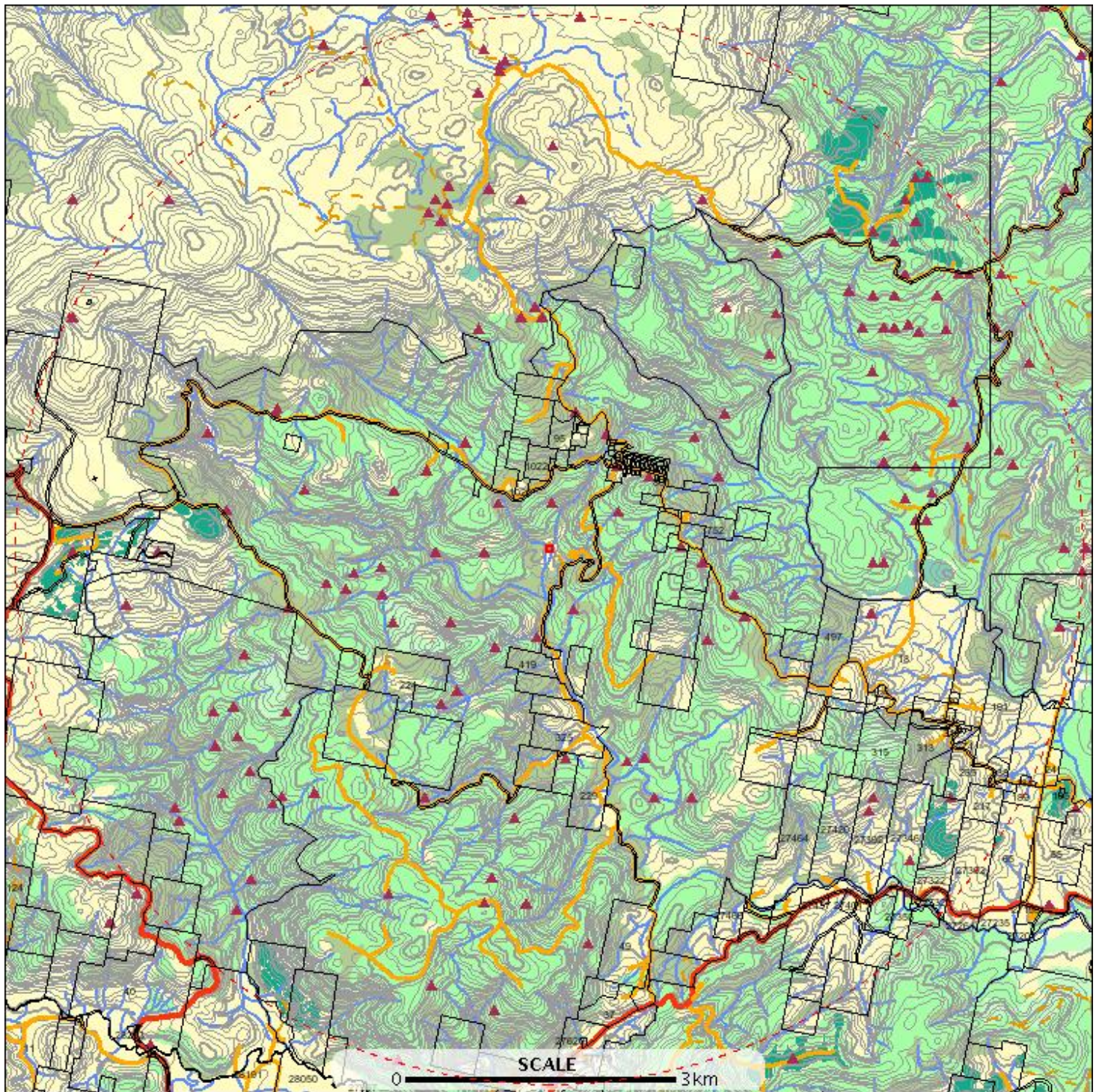
Telephone: (03) 6233 6556

Email: NatureConservation.Enquiries@dpipwe.tas.gov.au

Non-threatened flora of conservation significance within 5000 m

E: 579873
N: 5440519

E: 590072
N: 5440519



E: 579873
N: 5430319

E: 590072
N: 5430319

Non-threatened flora of conservation significance within 5000 m



Non-threatened flora of conservation significance within 5000 m

ID	Species	Common Name	Observers	Date	Location	Bio	Sci	RFA	Nat	Int	Res	Pri	Unc	Sen	Cul
928878	Acacia mucronata subsp. mucronata	erect caterpillar wattle	A Simson (2776)	23-Feb-1878	586621,5436676 +/- 2000m.	e									
929077	Acacia mucronata subsp. mucronata	erect caterpillar wattle	A Simson (2776)	04-Apr-1878	585224,5436692 +/- 2000m.	e									
12575	Acacia verniciflua	varnish wattle	Mark Wapstra (1621)	12-Apr-1996?	585962,5433083 +/- 100m.						3a				
79168	Acacia verniciflua	varnish wattle	David Ziegeler (7381)	18-Nov-1998?	588412,5438883 +/- 100m.						3a				
929034	Acacia verniciflua	varnish wattle	A Simson (2776)	07-Oct-1877	587973,5432959 +/- 2000m.						3a				
928881	Acacia verniciflua	varnish wattle	A Simson (2776)	22-Sep-1878	587973,5432959 +/- 2000m.						3a				
929195	Acacia verniciflua	varnish wattle	A Simson (2776)	01-Oct-1876	587973,5432959 +/- 2000m.						3a				
928882	Acacia verniciflua	varnish wattle	A Simson (2776)	22-Sep-1878	587973,5432959 +/- 2000m.						3a				
12388	Acacia verniciflua	varnish wattle	Mark Wapstra (1621)	26-Mar-1996?	585912,5436083 +/- 100m.						3a				
12412	Acacia verniciflua	varnish wattle	Mark Wapstra (1621)	26-Mar-1996?	586212,5435433 +/- 100m.						3a				
77280	Acacia verniciflua	varnish wattle	David Ziegeler (7381)	18-Nov-1998?	588012,5438383 +/- 100m.						3a				
79292	Aristotelia peduncularis	heartberry	David Ziegeler (7381)	18-Nov-1998?	588212,5437483 +/- 100m.	e					3a				
262957	Aristotelia peduncularis	heartberry	A. Simson (3720)	Dec-1875	588112,5435283 +/- 1000m.	e					3a				
264002	Aristotelia peduncularis	heartberry	A. Simson (3720)	30-Nov-1878	585512,5436483 +/- 1000m.	e					3a				
262717	Asplenium bulbiferum		C.J. Quinn (3989)	01-Jan-1600?	583912,5435383 +/- 1000m.									n	
79293	Asplenium terrestre	ground spleenwort	David Ziegeler (7381)	18-Nov-1998?	588212,5437483 +/- 100m.									n	
79111	Asplenium terrestre	ground spleenwort	David Ziegeler (7381)	18-Nov-1998?	588412,5438483 +/- 100m.									n	
77388	Asplenium terrestre	ground spleenwort	David Ziegeler (7381)	18-Nov-1998?	587912,5437483 +/- 100m.									n	
79243	Asplenium terrestre	ground spleenwort	David Ziegeler (7381)	18-Nov-1998?	588012,5437783 +/- 100m.									n	
77336	Asplenium terrestre	ground spleenwort	David Ziegeler (7381)	18-Nov-1998?	588212,5437783 +/- 100m.									n	
77406	Asplenium terrestre	ground spleenwort	David Ziegeler (7381)	18-Nov-1998?	588612,5437783 +/- 100m.									n	
77268	Asplenium terrestre	ground spleenwort	David Ziegeler (7381)	18-Nov-1998?	588312,5438683 +/- 100m.									n	
524448	Asplenium terrestre	ground spleenwort	Jamie Kirkpatrick (1315)	Jun-1986	587612,5438383 +/- 100m.									n	
263897	Astelia alpina var. alpina	pineapple grass	A. Simson (3720)	1877	583912,5438683 +/- 1000m.	e					3a				
929084	Baloskion tetraphyllum subsp. tetraphyllum	tassel cordrush	A Simson (2776)	03-Mar-1877	581012,5434890 +/- 2000m.						3a				
262959	Billardiera longiflora	purple appleberry	A. Simson (3720)	Dec-1875	588112,5435283 +/- 1000m.	e									
262958	Billardiera longiflora	purple appleberry	A. Simson (3720)	06-Dec-1878	588112,5435283 +/- 1000m.	e									
243425	Blechnum patersonii subsp. patersonii	strap waterfern	A. Moscal (3708)	23-Nov-1994	586312,5433083 +/- 100m.						3a				
263882	Blechnum penna-marina subsp. alpina	alpine waterfern	A. Simson (3720)	1879	583812,5433083 +/- 1000m.						3a				
929433	Bulbine semibarbata	smallflower leekily	A Simson (2776)	01-Dec-1875	587995,5434809 +/- 2000m.						3a				
942409	Bulbine semibarbata	smallflower leekily	- Unknown (21598)	01-Jan-1875	587995,5434809 +/- 2000m.						3a				

Non-threatened flora of conservation significance within 5000 m

ID	Species	Common Name	Observers	Date	Location	Bio	Sci	RFA	Nat	Int	Res	Pri	Unc	Sen	Cul
940971	Bunochilus melagrammus	blackstripe greenhood	T.E. Burns (5652)	12-Sep-1959	582387,5433024 +/- 2000m.						3a				
565428	Caladenia alpina	alpine finger-orchid	Ron Williamson (6392)	27-Sep-1990?	585612,5436183 +/- 500m.						3a				
929393	Carex appressa var. virgata	longleaf tall sedge	A Simson (2776)	01-Dec-1876	585224,5436692 +/- 2000m.	t									
411730	Carex raleighii	alpine sedge	Jamie Kirkpatrick (1315)	1984	584512,5439883 +/- 100m.						3a				
149021	Carex raleighii	alpine sedge	Karen Johnson (1435)	14-Mar-1996?	583262,5439783 +/- 100m.						3a				
411855	Carex raleighii	alpine sedge	Jamie Kirkpatrick (1315)	1984	584412,5438783 +/- 100m.						3a				
409617	Carex raleighii	alpine sedge	Jamie Kirkpatrick (1315)	1984	584312,5439683 +/- 100m.						3a				
409633	Carex raleighii	alpine sedge	Jamie Kirkpatrick (1315)	1984	585012,5439183 +/- 100m.						3a				
565380	Chiloglottis cornuta	green bird-orchid	Darryel Binns (6900)	09-Nov-1992?	582412,5436683 +/- 100m.						3a				
554782	Chiloglottis cornuta	green bird-orchid	Charles Taylor (4888)	01-Jan-1970?	587112,5438183 +/- 5000m.						3a				
242228	Chionogentias gunniana	gunns forestgentian	- Unknown (21598)	01-Jan-1600?	580512,5437583 +/- 9999m.	e					3a				
411804	Cotula alpina	alpine buttons	Jamie Kirkpatrick (1315)	1984	585012,5439183 +/- 100m.						3a				
411752	Cotula alpina	alpine buttons	Jamie Kirkpatrick (1315)	1984	584312,5439683 +/- 100m.						3a				
149022	Cotula alpina	alpine buttons	Karen Johnson (1435)	14-Mar-1996?	583262,5439783 +/- 100m.						3a				
411732	Cotula alpina	alpine buttons	Jamie Kirkpatrick (1315)	1984	584512,5439883 +/- 100m.						3a				
411858	Cotula alpina	alpine buttons	Jamie Kirkpatrick (1315)	1984	584412,5438783 +/- 100m.						3a				
943729	Craspedia glauca	common billybuttons	A M Purves (9223), K L Radford (9302)	16-Jan-2003	585202,5434842 +/- 2000m.	e									
77204	Ctenopteris heterophylla	gypsy fern	David Ziegeler (7381)	18-Nov-1998?	588412,5438483 +/- 100m.						3a				
148681	Cyathodes glauca	purple cheeseberry	Karen Johnson (1435)	13-Mar-1996?	584512,5439933 +/- 100m.	e					3a				
14812	Cyathodes glauca	purple cheeseberry	Mark Wapstra (1621)	26-Mar-1996?	584562,5439983 +/- 100m.	e					3a				
14355	Cyathodes glauca	purple cheeseberry	Mark Wapstra (1621)	26-Mar-1996?	583962,5438483 +/- 100m.	e					3a				
149023	Cyathodes parvifolia	pink mountain berry	Karen Johnson (1435)	14-Mar-1996?	583262,5439783 +/- 100m.	e									
409680	Cyathodes parvifolia	pink mountain berry	Jamie Kirkpatrick (1315)	1984	584412,5438783 +/- 100m.	e									
148723	Cyathodes straminea	spreading cheeseberry	Karen Johnson (1435)	13-Mar-1996?	584212,5440333 +/- 100m.	e									
149024	Danthonia dimidiata	half-formed wallaby-grass	Karen Johnson (1435)	14-Mar-1996?	583262,5439783 +/- 100m.	e									
14484	Dicksonia antarctica	soft treefern	Mark Wapstra (1621)	12-Apr-1996?	585962,5433083 +/- 100m.							y			
24262	Dicksonia antarctica	soft treefern	- Unknown (21598)	18-Nov-1977?	585342,5431715 +/- 100m.							y			
29690	Dicksonia antarctica	soft treefern	- Unknown (21598)	01-Jan-1974?	585706,5433419 +/- 100m.							y			
29692	Dicksonia antarctica	soft treefern	- Unknown (21598)	01-Jan-1974?	585870,5433457 +/- 100m.							y			
18661	Dicksonia antarctica	soft treefern	- Unknown (21598)	21-Nov-1972?	584652,5432893 +/- 100m.							y			

Non-threatened flora of conservation significance within 5000 m

ID	Species	Common Name	Observers	Date	Location	Bio	Sci	RFA	Nat	Int	Res	Pri	Unc	Sen	Cul
20747	Dicksonia antarctica	soft treefern	- Unknown (21598)	21-Nov-1977?	584112,5434083 +/- 100m.							y			
31277	Dicksonia antarctica	soft treefern	- Unknown (21598)	01-Feb-1974?	584470,5434492 +/- 100m.							y			
31588	Dicksonia antarctica	soft treefern	- Unknown (21598)	01-Jan-1974?	581509,5432868 +/- 100m.							y			
29693	Dicksonia antarctica	soft treefern	- Unknown (21598)	01-Jan-1974?	581471,5432987 +/- 100m.							y			
31698	Dicksonia antarctica	soft treefern	- Unknown (21598)	01-Feb-1974?	581917,5433120 +/- 100m.							y			
29875	Dicksonia antarctica	soft treefern	- Unknown (21598)	01-Jan-1974?	582049,5432034 +/- 100m.							y			
24307	Dicksonia antarctica	soft treefern	- Unknown (21598)	14-Dec-1987?	583562,5430633 +/- 100m.							y			
31230	Dicksonia antarctica	soft treefern	- Unknown (21598)	01-Feb-1974?	584463,5431093 +/- 100m.							y			
29771	Dicksonia antarctica	soft treefern	- Unknown (21598)	01-Jan-1974?	583875,5431324 +/- 100m.							y			
31521	Dicksonia antarctica	soft treefern	- Unknown (21598)	01-Feb-1974?	583473,5432178 +/- 100m.							y			
212744	Dicksonia antarctica	soft treefern	John Grant (3388)	19-Aug-1991?	584862,5434583 +/- 100m.							y			
38175	Dicksonia antarctica	soft treefern	- Unknown (21598)	01-Jun-1994?	584052,5434723 +/- 100m.							y			
24270	Dicksonia antarctica	soft treefern	- Unknown (21598)	14-Dec-1987?	583512,5434723 +/- 100m.							y			
29658	Dicksonia antarctica	soft treefern	- Unknown (21598)	01-Feb-1974?	583146,5435181 +/- 100m.							y			
22086	Dicksonia antarctica	soft treefern	- Unknown (21598)	07-Dec-1987?	582682,5435963 +/- 100m.							y			
31688	Dicksonia antarctica	soft treefern	- Unknown (21598)	01-Jan-1974?	583521,5435953 +/- 100m.							y			
24334	Dicksonia antarctica	soft treefern	- Unknown (21598)	17-Feb-1983?	582472,5433093 +/- 100m.							y			
24335	Dicksonia antarctica	soft treefern	- Unknown (21598)	01-Dec-1987?	582512,5433885 +/- 100m.							y			
29663	Dicksonia antarctica	soft treefern	- Unknown (21598)	01-Feb-1974?	582891,5435087 +/- 100m.							y			
20755	Dicksonia antarctica	soft treefern	- Unknown (21598)	10-Mar-1988?	583072,5435033 +/- 100m.							y			
35773	Dicksonia antarctica	soft treefern	- Unknown (21598)	01-Jun-1994?	581832,5433883 +/- 100m.							y			
25201	Dicksonia antarctica	soft treefern	- Unknown (21598)	11-Feb-1986?	581952,5435773 +/- 100m.							y			
31345	Dicksonia antarctica	soft treefern	- Unknown (21598)	01-Jan-1974?	582018,5433934 +/- 100m.							y			
29466	Dicksonia antarctica	soft treefern	- Unknown (21598)	01-Feb-1974?	582122,5434420 +/- 100m.							y			
25199	Dicksonia antarctica	soft treefern	- Unknown (21598)	11-Feb-1986?	581778,5436500 +/- 100m.							y			
77226	Dicksonia antarctica	soft treefern	David Ziegeler (7381)	18-Nov-1998?	588412,5438883 +/- 100m.							y			
79162	Dicksonia antarctica	soft treefern	David Ziegeler (7381)	18-Nov-1998?	588512,5438883 +/- 100m.							y			
148867	Dicksonia antarctica	soft treefern	Karen Johnson (1435)	13-Mar-1996?	584512,5439933 +/- 100m.							y			
14813	Dicksonia antarctica	soft treefern	Mark Wapstra (1621)	26-Mar-1996?	584562,5439983 +/- 100m.							y			
514895	Dicksonia antarctica	soft treefern	Jamie Kirkpatrick (1315)	Jun-1986	589212,5437983 +/- 100m.							y			
31466	Dicksonia antarctica	soft treefern	- Unknown (21598)	01-Jan-1974?	588694,5437465 +/- 100m.							y			
24305	Dicksonia antarctica	soft treefern	- Unknown (21598)	09-Dec-1987?	588762,5436783 +/- 100m.							y			
22142	Dicksonia antarctica	soft treefern	- Unknown (21598)	03-Nov-1987?	589162,5437483 +/- 100m.							y			
116512	Dicksonia antarctica	soft treefern	Fred Duncan (7477)	13-Mar-1996?	588412,5436183 +/- 100m.							y			

Non-threatened flora of conservation significance within 5000 m

ID	Species	Common Name	Observers	Date	Location	Bio	Sci	RFA	Nat	Int	Res	Pri	Unc	Sen	Cul
116482	Dicksonia antarctica	soft treefern	Fred Duncan (7477)	13-Mar-1996?	588412,5435683 +/- 100m.							y			
524480	Dicksonia antarctica	soft treefern	Jamie Kirkpatrick (1315)	Jun-1986	588812,5437983 +/- 100m.							y			
77330	Dicksonia antarctica	soft treefern	David Ziegeler (7381)	18-Nov-1998?	588912,5437983 +/- 100m.							y			
116497	Dicksonia antarctica	soft treefern	Fred Duncan (7477)	13-Mar-1996?	588512,5435683 +/- 100m.							y			
12326	Dicksonia antarctica	soft treefern	Mark Wapstra (1621)	25-Mar-1996?	588562,5435933 +/- 100m.							y			
77206	Dicksonia antarctica	soft treefern	David Ziegeler (7381)	18-Nov-1998?	588412,5438483 +/- 100m.							y			
77271	Dicksonia antarctica	soft treefern	David Ziegeler (7381)	18-Nov-1998?	588312,5438683 +/- 100m.							y			
514865	Dicksonia antarctica	soft treefern	Jamie Kirkpatrick (1315)	Jun-1986	588312,5437983 +/- 100m.							y			
116537	Dicksonia antarctica	soft treefern	Fred Duncan (7477)	13-Mar-1996?	588312,5435883 +/- 100m.							y			
31477	Dicksonia antarctica	soft treefern	- Unknown (21598)	01-Feb-1974?	588114,5436225 +/- 100m.							y			
22126	Dicksonia antarctica	soft treefern	- Unknown (21598)	15-Dec-1987?	588342,5437513 +/- 100m.							y			
79307	Dicksonia antarctica	soft treefern	David Ziegeler (7381)	18-Nov-1998?	588612,5437783 +/- 100m.							y			
79244	Dicksonia antarctica	soft treefern	David Ziegeler (7381)	18-Nov-1998?	588012,5437783 +/- 100m.							y			
79239	Dicksonia antarctica	soft treefern	David Ziegeler (7381)	18-Nov-1998?	588212,5437783 +/- 100m.							y			
22150	Dicksonia antarctica	soft treefern	- Unknown (21598)	08-Dec-1987?	588112,5436473 +/- 100m.							y			
29575	Dicksonia antarctica	soft treefern	- Unknown (21598)	01-Jan-1974?	588438,5437444 +/- 100m.							y			
79297	Dicksonia antarctica	soft treefern	David Ziegeler (7381)	18-Nov-1998?	588212,5437483 +/- 100m.							y			
77282	Dicksonia antarctica	soft treefern	David Ziegeler (7381)	18-Nov-1998?	588012,5438383 +/- 100m.							y			
79186	Dicksonia antarctica	soft treefern	David Ziegeler (7381)	18-Nov-1998?	588212,5438283 +/- 100m.							y			
31578	Dicksonia antarctica	soft treefern	- Unknown (21598)	01-Dec-1973?	586636,5437670 +/- 100m.							y			
31460	Dicksonia antarctica	soft treefern	- Unknown (21598)	01-Dec-1973?	587043,5437236 +/- 100m.							y			
31580	Dicksonia antarctica	soft treefern	- Unknown (21598)	01-Dec-1973?	587102,5437611 +/- 100m.							y			
79285	Dicksonia antarctica	soft treefern	David Ziegeler (7381)	18-Nov-1998?	587912,5437483 +/- 100m.							y			
29744	Dicksonia antarctica	soft treefern	- Unknown (21598)	01-Feb-1974?	586461,5434561 +/- 100m.							y			
12544	Dicksonia antarctica	soft treefern	Jeff Meggs (1338)	12-Apr-1996?	586712,5434983 +/- 100m.							y			
524400	Dicksonia antarctica	soft treefern	Jamie Kirkpatrick (1315)	Jun-1986	586812,5434783 +/- 100m.							y			
12415	Dicksonia antarctica	soft treefern	Mark Wapstra (1621)	26-Mar-1996?	586212,5435433 +/- 100m.							y			
14318	Dicksonia antarctica	soft treefern	Mark Wapstra (1621)	26-Mar-1996?	585912,5436083 +/- 100m.							y			
29668	Dicksonia antarctica	soft treefern	- Unknown (21598)	01-Jan-1974?	585625,5435758 +/- 100m.							y			
524453	Dicksonia antarctica	soft treefern	Jamie Kirkpatrick (1315)	Jun-1986	587612,5438383 +/- 100m.							y			
514822	Dicksonia antarctica	soft treefern	Jamie Kirkpatrick (1315)	Jun-1986	584912,5437583 +/- 100m.							y			
31708	Dicksonia antarctica	soft treefern	- Unknown (21598)	01-Dec-1973?	584844,5437677 +/- 100m.							y			
31360	Dicksonia antarctica	soft treefern	- Unknown (21598)	01-Dec-1973?	584368,5435378 +/- 100m.							y			

Non-threatened flora of conservation significance within 5000 m

ID	Species	Common Name	Observers	Date	Location	Bio	Sci	RFA	Nat	Int	Res	Pri	Unc	Sen	Cul
29513	Dicksonia antarctica	soft treefern	- Unknown (21598)	01-Dec-1973?	584500,5435836 +/- 100m.							y			
29511	Dicksonia antarctica	soft treefern	- Unknown (21598)	01-Dec-1973?	585002,5435842 +/- 100m.							y			
31643	Dicksonia antarctica	soft treefern	- Unknown (21598)	01-Jan-1974?	583829,5436148 +/- 100m.							y			
31566	Dicksonia antarctica	soft treefern	- Unknown (21598)	01-Jan-1974?	584317,5437470 +/- 100m.							y			
14265	Dicksonia antarctica	soft treefern	Mark Wapstra (1621)	25-Mar-1996?	589762,5434683 +/- 100m.							y			
77349	Diplazium australe	southern ladyfern	David Ziegeler (7381)	18-Nov-1998?	588012,5437783 +/- 100m.						3a				
514875	Eucalyptus delegatensis subsp. tasmaniensis	gumtopped stringybark	Jamie Kirkpatrick (1315)	Jun-1986	588812,5437983 +/- 100m.	e									
514845	Eucalyptus delegatensis subsp. tasmaniensis	gumtopped stringybark	Jamie Kirkpatrick (1315)	Jun-1986	587612,5438383 +/- 100m.	e									
514866	Eucalyptus delegatensis subsp. tasmaniensis	gumtopped stringybark	Jamie Kirkpatrick (1315)	Jun-1986	588312,5437983 +/- 100m.	e									
31414	Eucalyptus regnans	giant ash	- Unknown (21598)	01-Jan-1974?	584439,5432335 +/- 100m.						3a				
31354	Eucalyptus regnans	giant ash	- Unknown (21598)	01-Feb-1974?	583964,5433957 +/- 100m.						3a				
20748	Eucalyptus regnans	giant ash	- Unknown (21598)	21-Nov-1977?	584112,5434083 +/- 100m.						3a				
29399	Eucalyptus regnans	giant ash	- Unknown (21598)	01-Feb-1974?	584470,5434492 +/- 100m.						3a				
31649	Eucalyptus regnans	giant ash	- Unknown (21598)	01-Feb-1974?	582182,5432319 +/- 100m.						3a				
29695	Eucalyptus regnans	giant ash	- Unknown (21598)	01-Jan-1974?	581509,5432868 +/- 100m.						3a				
29694	Eucalyptus regnans	giant ash	- Unknown (21598)	01-Jan-1974?	581471,5432987 +/- 100m.						3a				
29812	Eucalyptus regnans	giant ash	- Unknown (21598)	01-Feb-1974?	581917,5433120 +/- 100m.						3a				
31694	Eucalyptus regnans	giant ash	- Unknown (21598)	01-Feb-1974?	582171,5433324 +/- 100m.						3a				
29598	Eucalyptus regnans	giant ash	- Unknown (21598)	01-Feb-1974?	581848,5433567 +/- 100m.						3a				
31741	Eucalyptus regnans	giant ash	- Unknown (21598)	01-Jan-1974?	582049,5432034 +/- 100m.						3a				
29366	Eucalyptus regnans	giant ash	- Unknown (21598)	01-Feb-1974?	584463,5431093 +/- 100m.						3a				
31639	Eucalyptus regnans	giant ash	- Unknown (21598)	01-Jan-1974?	583875,5431324 +/- 100m.						3a				
18632	Eucalyptus regnans	giant ash	- Unknown (21598)	18-Nov-1977?	584762,5432093 +/- 100m.						3a				
29827	Eucalyptus regnans	giant ash	- Unknown (21598)	01-Jan-1974?	584369,5432097 +/- 100m.						3a				
29630	Eucalyptus regnans	giant ash	- Unknown (21598)	01-Feb-1974?	583473,5432178 +/- 100m.						3a				
213435	Eucalyptus regnans	giant ash	John Grant (3388)	19-Aug-1991?	584862,5434583 +/- 100m.						3a				
24271	Eucalyptus regnans	giant ash	- Unknown (21598)	14-Dec-1987?	583512,5434723 +/- 100m.						3a				
35850	Eucalyptus regnans	giant ash	- Unknown (21598)	01-Jun-1994?	584052,5434723 +/- 100m.						3a				
36106	Eucalyptus regnans	giant ash	- Unknown (21598)	01-Feb-1986?	583413,5434983 +/- 100m.						3a				
29657	Eucalyptus regnans	giant ash	- Unknown (21598)	01-Jan-1974?	583401,5435239 +/- 100m.						3a				
22181	Eucalyptus regnans	giant ash	- Unknown (21598)	17-Feb-1983?	582472,5433093 +/- 100m.						3a				
24336	Eucalyptus regnans	giant ash	- Unknown (21598)	01-Dec-1987?	582512,5433885 +/- 100m.						3a				

Non-threatened flora of conservation significance within 5000 m

ID	Species	Common Name	Observers	Date	Location	Bio	Sci	RFA	Nat	Int	Res	Pri	Unc	Sen	Cul
31226	Eucalyptus regnans	giant ash	- Unknown (21598)	01-Jan-1974?	582528,5434854 +/- 100m.						3a				
31511	Eucalyptus regnans	giant ash	- Unknown (21598)	01-Feb-1974?	582776,5433130 +/- 100m.						3a				
31535	Eucalyptus regnans	giant ash	- Unknown (21598)	01-Feb-1974?	582891,5435087 +/- 100m.						3a				
20756	Eucalyptus regnans	giant ash	- Unknown (21598)	10-Mar-1988?	583072,5435033 +/- 100m.						3a				
29660	Eucalyptus regnans	giant ash	- Unknown (21598)	01-Feb-1974?	583146,5435181 +/- 100m.						3a				
38061	Eucalyptus regnans	giant ash	- Unknown (21598)	01-Jun-1994?	581832,5433883 +/- 100m.						3a				
31346	Eucalyptus regnans	giant ash	- Unknown (21598)	01-Jan-1974?	582018,5433934 +/- 100m.						3a				
29347	Eucalyptus regnans	giant ash	- Unknown (21598)	01-Feb-1974?	582057,5433652 +/- 100m.						3a				
29481	Eucalyptus regnans	giant ash	- Unknown (21598)	01-Feb-1974?	582122,5434420 +/- 100m.						3a				
77216	Eucalyptus regnans	giant ash	David Ziegeler (7381)	18-Nov-1998?	588512,5438883 +/- 100m.						3a				
18658	Eucalyptus regnans	giant ash	- Unknown (21598)	16-Nov-1987?	589802,5435423 +/- 100m.						3a				
514896	Eucalyptus regnans	giant ash	Jamie Kirkpatrick (1315)	Jun-1986	589212,5437983 +/- 100m.						3a				
24306	Eucalyptus regnans	giant ash	- Unknown (21598)	09-Dec-1987?	588762,5436783 +/- 100m.						3a				
29436	Eucalyptus regnans	giant ash	- Unknown (21598)	01-Feb-1974?	589474,5437154 +/- 100m.						3a				
14257	Eucalyptus regnans	giant ash	Mark Wapstra (1621)	25-Mar-1996?	588562,5435933 +/- 100m.						3a				
29665	Eucalyptus regnans	giant ash	- Unknown (21598)	01-Dec-1973?	588899,5436362 +/- 100m.						3a				
31709	Eucalyptus regnans	giant ash	- Unknown (21598)	01-Dec-1973?	589192,5436328 +/- 100m.						3a				
29839	Eucalyptus regnans	giant ash	- Unknown (21598)	01-Jan-1974?	589321,5436202 +/- 100m.						3a				
116543	Eucalyptus regnans	giant ash	Fred Duncan (7477)	13-Mar-1996?	588412,5436183 +/- 100m.						3a				
116485	Eucalyptus regnans	giant ash	Fred Duncan (7477)	13-Mar-1996?	588412,5435683 +/- 100m.						3a				
79114	Eucalyptus regnans	giant ash	David Ziegeler (7381)	18-Nov-1998?	588412,5438483 +/- 100m.						3a				
116466	Eucalyptus regnans	giant ash	Fred Duncan (7477)	13-Mar-1996?	588512,5435683 +/- 100m.						3a				
116538	Eucalyptus regnans	giant ash	Fred Duncan (7477)	13-Mar-1996?	588312,5435883 +/- 100m.						3a				
22128	Eucalyptus regnans	giant ash	- Unknown (21598)	15-Dec-1987?	588342,5437513 +/- 100m.						3a				
79308	Eucalyptus regnans	giant ash	David Ziegeler (7381)	18-Nov-1998?	588612,5437783 +/- 100m.						3a				
22179	Eucalyptus regnans	giant ash	- Unknown (21598)	08-Dec-1987?	588112,5436473 +/- 100m.						3a				
29667	Eucalyptus regnans	giant ash	- Unknown (21598)	01-Jan-1974?	588004,5437073 +/- 100m.						3a				
29576	Eucalyptus regnans	giant ash	- Unknown (21598)	01-Jan-1974?	588438,5437444 +/- 100m.						3a				
77397	Eucalyptus regnans	giant ash	David Ziegeler (7381)	18-Nov-1998?	588212,5437483 +/- 100m.						3a				
524401	Eucalyptus regnans	giant ash	Jamie Kirkpatrick (1315)	Jun-1986	586812,5434783 +/- 100m.						3a				
29572	Eucalyptus regnans	giant ash	- Unknown (21598)	01-Dec-1973?	587043,5437236 +/- 100m.						3a				
31581	Eucalyptus regnans	giant ash	- Unknown (21598)	01-Dec-1973?	587102,5437611 +/- 100m.						3a				
79286	Eucalyptus regnans	giant ash	David Ziegeler (7381)	18-Nov-1998?	587912,5437483 +/- 100m.						3a				
12545	Eucalyptus regnans	giant ash	Jeff Meggs (1338)	12-Apr-1996?	586712,5434983 +/- 100m.						3a				

Non-threatened flora of conservation significance within 5000 m

ID	Species	Common Name	Observers	Date	Location	Bio	Sci	RFA	Nat	Int	Res	Pri	Unc	Sen	Cul
14320	Eucalyptus regnans	giant ash	Mark Wapstra (1621)	26-Mar-1996?	585912,5436083 +/- 100m.						3a				
22133	Eucalyptus regnans	giant ash	- Unknown (21598)	30-Nov-1972?	586562,5436088 +/- 100m.						3a				
18637	Eucalyptus regnans	giant ash	- Unknown (21598)	30-Nov-1972?	586340,5436453 +/- 100m.						3a				
31570	Eucalyptus regnans	giant ash	- Unknown (21598)	01-Jan-1974?	585625,5435758 +/- 100m.						3a				
514823	Eucalyptus regnans	giant ash	Jamie Kirkpatrick (1315)	Jun-1986	584912,5437583 +/- 100m.						3a				
29837	Eucalyptus regnans	giant ash	- Unknown (21598)	01-Dec-1973?	584844,5437677 +/- 100m.						3a				
31361	Eucalyptus regnans	giant ash	- Unknown (21598)	01-Dec-1973?	584368,5435378 +/- 100m.						3a				
12352	Eucalyptus regnans	giant ash	Mark Wapstra (1621)	25-Mar-1996?	589762,5434683 +/- 100m.						3a				
14485	Eucalyptus regnans	giant ash	Mark Wapstra (1621)	12-Apr-1996?	585962,5433083 +/- 100m.						3a				
31642	Eucalyptus regnans	giant ash	- Unknown (21598)	01-Dec-1973?	585130,5433449 +/- 100m.						3a				
29691	Eucalyptus regnans	giant ash	- Unknown (21598)	01-Jan-1974?	585706,5433419 +/- 100m.						3a				
31584	Eucalyptus regnans	giant ash	- Unknown (21598)	01-Jan-1974?	585870,5433457 +/- 100m.						3a				
929873	Eucalyptus subcrenulata	alpine yellow gum	- Unknown (21598)	27-Oct-2003	582429,5436724 +/- 2000m.	e									
929868	Eucalyptus subcrenulata	alpine yellow gum	- Unknown (21598)	27-Oct-2003	582429,5436724 +/- 2000m.	e									
929870	Eucalyptus subcrenulata	alpine yellow gum	- Unknown (21598)	27-Oct-2003	582429,5436724 +/- 2000m.	e									
929872	Eucalyptus subcrenulata	alpine yellow gum	- Unknown (21598)	27-Oct-2003	582429,5436724 +/- 2000m.	e									
929874	Eucalyptus subcrenulata	alpine yellow gum	- Unknown (21598)	27-Oct-2003	582429,5436724 +/- 2000m.	e									
929869	Eucalyptus subcrenulata	alpine yellow gum	- Unknown (21598)	27-Oct-2003	582429,5436724 +/- 2000m.	e									
929871	Eucalyptus subcrenulata	alpine yellow gum	- Unknown (21598)	27-Oct-2003	582429,5436724 +/- 2000m.	e									
929101	Euchiton sphaericus	globe cottonleaf	A Simson (2776)	02-Feb-1877	587973,5432959 +/- 2000m.						3a				
929435	Gastrodia procera	tall potato-orchid	A Simson (2776)	01-Dec-1866	587995,5434809 +/- 2000m.						3a				
1057484	Gastrodia sesamoides	short potato-orchid	L Yeates (1614), Mark Wapstra (1621)	13-Jan-2009	584035,5438810 +/- 100m.						3a				
524425	Gaultheria hispida	copperleaf snowberry	Jamie Kirkpatrick (1315)	Jun-1986	584912,5437583 +/- 100m.	e					3a				
929237	Gaultheria hispida	copperleaf snowberry	A Simson (2776)	01-Nov-1876	585224,5436692 +/- 2000m.	e					3a				
928791	Gaultheria hispida	copperleaf snowberry	A Simson (2776)	30-Nov-1878	585224,5436692 +/- 2000m.	e					3a				
148895	Gleichenia alpina	alpine coralfern	Karen Johnson (1435)	13-Mar-1996?	584212,5440333 +/- 100m.	e						y			
264170	Gleichenia microphylla	scrambling coralfern	A. Simson (3720)	16-Apr-1879	588112,5435283 +/- 1000m.							y			
148744	Gonocarpus serpyllifolius	alpine raspwort	Karen Johnson (1435)	13-Mar-1996?	584212,5440333 +/- 100m.						3a				
148879	Gonocarpus serpyllifolius	alpine raspwort	Karen Johnson (1435)	14-Mar-1996?	583262,5439783 +/- 100m.						3a				
411810	Gonocarpus serpyllifolius	alpine raspwort	Jamie Kirkpatrick (1315)	1984	585012,5439183 +/- 100m.						3a				
939252	Gonocarpus serpyllifolius	alpine raspwort	P.S. Short (5343)	05-Feb-1983	585267,5440393 +/- 2000m.						3a				
409607	Gonocarpus serpyllifolius	alpine raspwort	Jamie Kirkpatrick (1315)	1984	584512,5439883 +/- 100m.						3a				

Non-threatened flora of conservation significance within 5000 m

ID	Species	Common Name	Observers	Date	Location	Bio	Sci	RFA	Nat	Int	Res	Pri	Unc	Sen	Cul
411862	Gonocarpus serpyllifolius	alpine raspwort	Jamie Kirkpatrick (1315)	1984	584412,5438783 +/- 100m.						3a				
411787	Gonocarpus serpyllifolius	alpine raspwort	Jamie Kirkpatrick (1315)	1984	584312,5439683 +/- 100m.						3a				
928861	Goodenia ovata	hop native-primrose	A Simson (2776)	24-Nov-1879	587973,5432959 +/- 2000m.						3a				
263883	Grammitis billardierei	common fingerfern	C.J. Quinn (3989)	01-Jan-1600?	583912,5435383 +/- 1000m.						3a				
514846	Grammitis billardierei	common fingerfern	Jamie Kirkpatrick (1315)	Jun-1986	587612,5438383 +/- 100m.						3a				
14332	Grammitis billardierei	common fingerfern	Mark Wapstra (1621)	26-Mar-1996?	586212,5435433 +/- 100m.						3a				
77389	Grammitis billardierei	common fingerfern	David Ziegeler (7381)	18-Nov-1998?	587912,5437483 +/- 100m.						3a				
79298	Grammitis billardierei	common fingerfern	David Ziegeler (7381)	18-Nov-1998?	588212,5437483 +/- 100m.						3a				
79245	Grammitis billardierei	common fingerfern	David Ziegeler (7381)	18-Nov-1998?	588012,5437783 +/- 100m.						3a				
77338	Grammitis billardierei	common fingerfern	David Ziegeler (7381)	18-Nov-1998?	588212,5437783 +/- 100m.						3a				
77209	Grammitis billardierei	common fingerfern	David Ziegeler (7381)	18-Nov-1998?	588412,5438483 +/- 100m.						3a				
79163	Grammitis billardierei	common fingerfern	David Ziegeler (7381)	18-Nov-1998?	588512,5438883 +/- 100m.						3a				
116486	Grammitis billardierei	common fingerfern	Fred Duncan (7477)	13-Mar-1996?	588412,5435683 +/- 100m.						3a				
12916	Grammitis billardierei	common fingerfern	Mark Wapstra (1621)	26-Mar-1996?	584562,5439983 +/- 100m.						3a				
148683	Grammitis billardierei	common fingerfern	Karen Johnson (1435)	13-Mar-1996?	584512,5439933 +/- 100m.						3a				
12442	Grammitis billardierei	common fingerfern	Mark Wapstra (1621)	26-Mar-1996?	583962,5438483 +/- 100m.						3a				
262627	Grammitis billardierei	common fingerfern	C.J. Quinn (3989)	01-Jan-1600?	581412,5438683 +/- 1000m.						3a				
244673	Helichrysum leucopsidium	satin everlasting	- Unknown (21598)	01-Jan-1600?	588012,5435283 +/- 2000m.						3a				
929351	Hierochloa redolens	sweet holygrass	A Simson (2776)	01-Feb-1878	581012,5434890 +/- 2000m.						3a				
262640	Histiopteris incisa	batswing fern	A. Simson (3720)	1879	581412,5438683 +/- 1000m.							y			
213436	Histiopteris incisa	batswing fern	John Grant (3388)	19-Aug-1991?	584862,5434583 +/- 100m.							y			
79164	Histiopteris incisa	batswing fern	David Ziegeler (7381)	18-Nov-1998?	588512,5438883 +/- 100m.							y			
79172	Histiopteris incisa	batswing fern	David Ziegeler (7381)	18-Nov-1998?	588412,5438883 +/- 100m.							y			
148885	Histiopteris incisa	batswing fern	Karen Johnson (1435)	13-Mar-1996?	584512,5439933 +/- 100m.							y			
14833	Histiopteris incisa	batswing fern	Mark Wapstra (1621)	26-Mar-1996?	584562,5439983 +/- 100m.							y			
14266	Histiopteris incisa	batswing fern	Mark Wapstra (1621)	25-Mar-1996?	589762,5434683 +/- 100m.							y			
79227	Histiopteris incisa	batswing fern	David Ziegeler (7381)	18-Nov-1998?	588912,5437983 +/- 100m.							y			
524504	Histiopteris incisa	batswing fern	Jamie Kirkpatrick (1315)	Jun-1986	589212,5437983 +/- 100m.							y			
116459	Histiopteris incisa	batswing fern	Fred Duncan (7477)	13-Mar-1996?	588412,5435683 +/- 100m.							y			
116544	Histiopteris incisa	batswing fern	Fred Duncan (7477)	13-Mar-1996?	588412,5436183 +/- 100m.							y			
514876	Histiopteris incisa	batswing fern	Jamie Kirkpatrick (1315)	Jun-1986	588812,5437983 +/- 100m.							y			
116498	Histiopteris incisa	batswing fern	Fred Duncan (7477)	13-Mar-1996?	588512,5435683 +/- 100m.							y			
14258	Histiopteris incisa	batswing fern	Mark Wapstra (1621)	25-Mar-1996?	588562,5435933 +/- 100m.							y			

Non-threatened flora of conservation significance within 5000 m

ID	Species	Common Name	Observers	Date	Location	Bio	Sci	RFA	Nat	Int	Res	Pri	Unc	Sen	Cul
77273	Histiopteris incisa	batswing fern	David Ziegeler (7381)	18-Nov-1998?	588312,5438683 +/- 100m.							y			
514868	Histiopteris incisa	batswing fern	Jamie Kirkpatrick (1315)	Jun-1986	588312,5437983 +/- 100m.							y			
79116	Histiopteris incisa	batswing fern	David Ziegeler (7381)	18-Nov-1998?	588412,5438483 +/- 100m.							y			
79219	Histiopteris incisa	batswing fern	David Ziegeler (7381)	18-Nov-1998?	588212,5438283 +/- 100m.							y			
12546	Histiopteris incisa	batswing fern	Jeff Meggs (1338)	12-Apr-1996?	586712,5434983 +/- 100m.							y			
14349	Histiopteris incisa	batswing fern	Mark Wapstra (1621)	26-Mar-1996?	586212,5435433 +/- 100m.							y			
12390	Histiopteris incisa	batswing fern	Mark Wapstra (1621)	26-Mar-1996?	585912,5436083 +/- 100m.							y			
514847	Histiopteris incisa	batswing fern	Jamie Kirkpatrick (1315)	Jun-1986	587612,5438383 +/- 100m.							y			
244655	Histiopteris incisa	batswing fern	C.J. Quinn (3989)	01-Jan-1600?	588012,5433083 +/- 2000m.							y			
12576	Histiopteris incisa	batswing fern	Mark Wapstra (1621)	12-Apr-1996?	585962,5433083 +/- 100m.							y			
12443	Huperzia varia	long clubmoss	Mark Wapstra (1621)	26-Mar-1996?	583962,5438483 +/- 100m.							y			
244287	Huperzia varia	long clubmoss	A. Simson (3720)	01-Jan-1600?	586412,5435283 +/- 2000m.							y			
264003	Huperzia varia	long clubmoss	A. Simson (3720)	Jul-1876	585512,5436483 +/- 1000m.							y			
264046	Hymenophyllum australe	southern filmyfern	A. Simson. (6122)	01-Jan-1600?	586412,5438683 +/- 1000m.							y			
524454	Hymenophyllum australe	southern filmyfern	Jamie Kirkpatrick (1315)	Jun-1986	587612,5438383 +/- 100m.							y			
12547	Hymenophyllum cupressiforme	common filmyfern	Jeff Meggs (1338)	12-Apr-1996?	586712,5434983 +/- 100m.							y			
79287	Hymenophyllum cupressiforme	common filmyfern	David Ziegeler (7381)	18-Nov-1998?	587912,5437483 +/- 100m.							y			
116539	Hymenophyllum cupressiforme	common filmyfern	Fred Duncan (7477)	13-Mar-1996?	588312,5435883 +/- 100m.							y			
79117	Hymenophyllum cupressiforme	common filmyfern	David Ziegeler (7381)	18-Nov-1998?	588412,5438483 +/- 100m.							y			
12344	Hymenophyllum flabellatum	shiny filmyfern	Mark Wapstra (1621)	25-Mar-1996?	588562,5435933 +/- 100m.							y			
79220	Hymenophyllum flabellatum	shiny filmyfern	David Ziegeler (7381)	18-Nov-1998?	588212,5438283 +/- 100m.							y			
262938	Hymenophyllum flabellatum	shiny filmyfern	C.J. Quinn (3989)	01-Jan-1600?	588012,5433083 +/- 1000m.							y			
79118	Hymenophyllum flabellatum	shiny filmyfern	David Ziegeler (7381)	18-Nov-1998?	588412,5438483 +/- 100m.							y			
116513	Hymenophyllum flabellatum	shiny filmyfern	Fred Duncan (7477)	13-Mar-1996?	588412,5436183 +/- 100m.							y			
244288	Hymenophyllum flabellatum	shiny filmyfern	F.E. Burbury (4270)	01-Jan-1600?	586412,5435283 +/- 2000m.							y			
514838	Hymenophyllum flabellatum	shiny filmyfern	Jamie Kirkpatrick (1315)	Jun-1986	584912,5437583 +/- 100m.							y			
524455	Hymenophyllum flabellatum	shiny filmyfern	Jamie Kirkpatrick (1315)	Jun-1986	587612,5438383 +/- 100m.							y			
77398	Hymenophyllum flabellatum	shiny filmyfern	David Ziegeler (7381)	18-Nov-1998?	588212,5437483 +/- 100m.							y			
116503	Hymenophyllum flabellatum	shiny filmyfern	Fred Duncan (7477)	13-Mar-1996?	588312,5435883 +/- 100m.							y			
79246	Hymenophyllum flabellatum	shiny filmyfern	David Ziegeler (7381)	18-Nov-1998?	588012,5437783 +/- 100m.							y			
79240	Hymenophyllum flabellatum	shiny filmyfern	David Ziegeler (7381)	18-Nov-1998?	588212,5437783 +/- 100m.							y			

Non-threatened flora of conservation significance within 5000 m

ID	Species	Common Name	Observers	Date	Location	Bio	Sci	RFA	Nat	Int	Res	Pri	Unc	Sen	Cul
116487	Hymenophyllum peltatum	alpine filmyfern	Fred Duncan (7477)	13-Mar-1996?	588412,5435683 +/- 100m.							y			
148684	Hymenophyllum peltatum	alpine filmyfern	Karen Johnson (1435)	13-Mar-1996?	584512,5439933 +/- 100m.							y			
242996	Hymenophyllum peltatum	alpine filmyfern	A. Simson (3720)	23-Apr-1879	580512,5435383 +/- 2000m.							y			
242997	Hymenophyllum peltatum	alpine filmyfern	A. Simson (3720)	Aug-1876	580512,5435383 +/- 20000m.							y			
244289	Hymenophyllum peltatum	alpine filmyfern	A. Simson (3720)	1874	586412,5435283 +/- 2000m.							y			
77350	Hymenophyllum rarum	narrow filmyfern	David Ziegeler (7381)	18-Nov-1998?	588012,5437783 +/- 100m.							y			
243439	Hymenophyllum rarum	narrow filmyfern	A. Simson (3720)	Aug-1876	586412,5435283 +/- 20000m.							y			
12444	Hymenophyllum rarum	narrow filmyfern	Mark Wapstra (1621)	26-Mar-1996?	583962,5438483 +/- 100m.							y			
263896	Hymenophyllum rarum	narrow filmyfern	C.J. Quinn (3989)	01-Jan-1600?	583912,5435383 +/- 1000m.							y			
514839	Hymenophyllum rarum	narrow filmyfern	Jamie Kirkpatrick (1315)	Jun-1986	584912,5437583 +/- 100m.							y			
242998	Hymenophyllum rarum	narrow filmyfern	A.M. Gray (3762)	23-Sep-1976	580512,5437583 +/- 2000m.							y			
524456	Hymenophyllum rarum	narrow filmyfern	Jamie Kirkpatrick (1315)	Jun-1986	587612,5438383 +/- 100m.							y			
148685	Hymenophyllum rarum	narrow filmyfern	Karen Johnson (1435)	13-Mar-1996?	584512,5439933 +/- 100m.							y			
264004	Hymenophyllum rarum	narrow filmyfern	A. Simson (3720)	01-Jan-1600?	585512,5436483 +/- 1000m.							y			
14834	Hymenophyllum rarum	narrow filmyfern	Mark Wapstra (1621)	26-Mar-1996?	584562,5439983 +/- 100m.							y			
79241	Hymenophyllum rarum	narrow filmyfern	David Ziegeler (7381)	18-Nov-1998?	588212,5437783 +/- 100m.							y			
79309	Hymenophyllum rarum	narrow filmyfern	David Ziegeler (7381)	18-Nov-1998?	588612,5437783 +/- 100m.							y			
79221	Hymenophyllum rarum	narrow filmyfern	David Ziegeler (7381)	18-Nov-1998?	588212,5438283 +/- 100m.							y			
77390	Hymenophyllum rarum	narrow filmyfern	David Ziegeler (7381)	18-Nov-1998?	587912,5437483 +/- 100m.							y			
79119	Hymenophyllum rarum	narrow filmyfern	David Ziegeler (7381)	18-Nov-1998?	588412,5438483 +/- 100m.							y			
12353	Hymenophyllum rarum	narrow filmyfern	Mark Wapstra (1621)	25-Mar-1996?	589762,5434683 +/- 100m.							y			
148686	Hypolepis rugosula	ruddy groundfern	Karen Johnson (1435)	13-Mar-1996?	584512,5439933 +/- 100m.							y			
79288	Hypolepis rugosula	ruddy groundfern	David Ziegeler (7381)	18-Nov-1998?	587912,5437483 +/- 100m.							y			
77210	Hypolepis rugosula	ruddy groundfern	David Ziegeler (7381)	18-Nov-1998?	588412,5438483 +/- 100m.							y			
262962	Hypolepis rugosula	ruddy groundfern	C.J. Quinn (3989)	01-Jan-1600?	588112,5435283 +/- 1000m.							y			
79310	Hypolepis rugosula	ruddy groundfern	David Ziegeler (7381)	18-Nov-1998?	588612,5437783 +/- 100m.							y			
77217	Hypolepis rugosula	ruddy groundfern	David Ziegeler (7381)	18-Nov-1998?	588512,5438883 +/- 100m.							y			
79299	Hypolepis rugosula	ruddy groundfern	David Ziegeler (7381)	18-Nov-1998?	588212,5437483 +/- 100m.							y			
79247	Hypolepis rugosula	ruddy groundfern	David Ziegeler (7381)	18-Nov-1998?	588012,5437783 +/- 100m.							y			
524481	Hypolepis rugosula	ruddy groundfern	Jamie Kirkpatrick (1315)	Jun-1986	588812,5437983 +/- 100m.							y			
524426	Hypolepis rugosula	ruddy groundfern	Jamie Kirkpatrick (1315)	Jun-1986	584912,5437583 +/- 100m.							y			
148883	Juncus bassianus	forest rush	Karen Johnson (1435)	14-Mar-1996?	583262,5439783 +/- 100m.						3a				
242640	Lagenophora montana	mountain bottledaisy	- Unknown (21598)	05-Feb-1983	583912,5438683 +/- 2000m.						3a				

Non-threatened flora of conservation significance within 5000 m

ID	Species	Common Name	Observers	Date	Location	Bio	Sci	RFA	Nat	Int	Res	Pri	Unc	Sen	Cul
243011	Lycopodiella lateralis	slenderclubmoss	A. Simson (3720)	1879	580512,5437583 +/- 2000m.						3a	y			
14358	Lycopodium fastigiatum	mountain clubmoss	Mark Wapstra (1621)	26-Mar-1996?	583962,5438483 +/- 100m.						3a	y			
242862	Lycopodium fastigiatum	mountain clubmoss	P.S. Short (5343)	05-Feb-1983	584712,5438683 +/- 2000m.						3a	y			
148747	Lycopodium fastigiatum	mountain clubmoss	Karen Johnson (1435)	13-Mar-1996?	584212,5440333 +/- 100m.						3a	y			
409669	Lycopodium fastigiatum	mountain clubmoss	Jamie Kirkpatrick (1315)	1984	585012,5439183 +/- 100m.						3a	y			
148890	Lycopodium fastigiatum	mountain clubmoss	Karen Johnson (1435)	13-Mar-1996?	584362,5440083 +/- 100m.						3a	y			
148901	Lycopodium fastigiatum	mountain clubmoss	Karen Johnson (1435)	14-Mar-1996?	583262,5439783 +/- 100m.						3a	y			
242227	Lycopodium scariosum	spreading clubmoss	A. Simson (3720)	1878	580512,5435383 +/- 2000m.							y			
941284	Melaleuca squamea	swamp honeymyrtle	W.D. Jackson (5722)	17-Apr-1979	585267,5440393 +/- 2000m.						3a				
148897	Melaleuca squamea	swamp honeymyrtle	Karen Johnson (1435)	13-Mar-1996?	584212,5440333 +/- 100m.						3a				
262939	Melaleuca squarrosa	scented paperbark	A. Simson (3720)	Nov-1876	588012,5433083 +/- 1000m.						3a				
929068	Mitrasacme pilosa	hairy mitrewort	A Simson (2776)	04-Mar-1877	587995,5434809 +/- 2000m.						3a				
77211	Muehlenbeckia gunnii	forest lignum	David Ziegeler (7381)	18-Nov-1998?	588412,5438483 +/- 100m.						3a				
79300	Muehlenbeckia gunnii	forest lignum	David Ziegeler (7381)	18-Nov-1998?	588212,5437483 +/- 100m.						3a				
77391	Muehlenbeckia gunnii	forest lignum	David Ziegeler (7381)	18-Nov-1998?	587912,5437483 +/- 100m.						3a				
14447	Muehlenbeckia gunnii	forest lignum	Jeff Meggs (1338)	12-Apr-1996?	586712,5434983 +/- 100m.						3a				
524457	Muehlenbeckia gunnii	forest lignum	Jamie Kirkpatrick (1315)	Jun-1986	587612,5438383 +/- 100m.						3a				
524482	Muehlenbeckia gunnii	forest lignum	Jamie Kirkpatrick (1315)	Jun-1986	588812,5437983 +/- 100m.						3a				
524506	Muehlenbeckia gunnii	forest lignum	Jamie Kirkpatrick (1315)	Jun-1986	589212,5437983 +/- 100m.						3a				
77332	Muehlenbeckia gunnii	forest lignum	David Ziegeler (7381)	18-Nov-1998?	588912,5437983 +/- 100m.						3a				
77218	Muehlenbeckia gunnii	forest lignum	David Ziegeler (7381)	18-Nov-1998?	588512,5438883 +/- 100m.						3a				
524476	Muehlenbeckia gunnii	forest lignum	Jamie Kirkpatrick (1315)	Jun-1986	588312,5437983 +/- 100m.						3a				
929033	Nemacianthus caudatus	mayfly orchid	A Simson (2776)	07-Oct-1877	587973,5432959 +/- 2000m.						3a				
29485	Nothofagus cunninghamii	myrtle beech	- Unknown (21598)	01-Feb-1974?	583964,5433957 +/- 100m.							y			
36107	Nothofagus cunninghamii	myrtle beech	- Unknown (21598)	01-Feb-1986?	583413,5434983 +/- 100m.							y			
29661	Nothofagus cunninghamii	myrtle beech	- Unknown (21598)	01-Feb-1974?	583146,5435181 +/- 100m.							y			
25200	Nothofagus cunninghamii	myrtle beech	- Unknown (21598)	11-Feb-1986?	581778,5436500 +/- 100m.							y			
409609	Nothofagus cunninghamii	myrtle beech	Jamie Kirkpatrick (1315)	1984	584512,5439883 +/- 100m.							y			
148689	Nothofagus cunninghamii	myrtle beech	Karen Johnson (1435)	13-Mar-1996?	584512,5439933 +/- 100m.							y			
14837	Nothofagus cunninghamii	myrtle beech	Mark Wapstra (1621)	26-Mar-1996?	584562,5439983 +/- 100m.							y			
411846	Nothofagus cunninghamii	myrtle beech	Jamie Kirkpatrick (1315)	1984	585012,5439183 +/- 100m.							y			
148891	Nothofagus cunninghamii	myrtle beech	Karen Johnson (1435)	13-Mar-1996?	584362,5440083 +/- 100m.							y			

Non-threatened flora of conservation significance within 5000 m

ID	Species	Common Name	Observers	Date	Location	Bio	Sci	RFA	Nat	Int	Res	Pri	Unc	Sen	Cul
411793	Nothofagus cunninghamii	myrtle beech	Jamie Kirkpatrick (1315)	1984	584312,5439683 +/- 100m.							y			
148750	Nothofagus cunninghamii	myrtle beech	Karen Johnson (1435)	13-Mar-1996?	584212,5440333 +/- 100m.							y			
411866	Nothofagus cunninghamii	myrtle beech	Jamie Kirkpatrick (1315)	1984	584412,5438783 +/- 100m.							y			
116460	Nothofagus cunninghamii	myrtle beech	Fred Duncan (7477)	13-Mar-1996?	588412,5435683 +/- 100m.							y			
79120	Nothofagus cunninghamii	myrtle beech	David Ziegeler (7381)	18-Nov-1998?	588412,5438483 +/- 100m.							y			
116504	Nothofagus cunninghamii	myrtle beech	Fred Duncan (7477)	13-Mar-1996?	588312,5435883 +/- 100m.							y			
77409	Nothofagus cunninghamii	myrtle beech	David Ziegeler (7381)	18-Nov-1998?	588612,5437783 +/- 100m.							y			
77399	Nothofagus cunninghamii	myrtle beech	David Ziegeler (7381)	18-Nov-1998?	588212,5437483 +/- 100m.							y			
929423	Nothofagus cunninghamii	myrtle beech	A Simson (2776)	01-Dec-1875	587995,5434809 +/- 2000m.							y			
29687	Nothofagus cunninghamii	myrtle beech	- Unknown (21598)	01-Dec-1973?	586636,5437670 +/- 100m.							y			
29573	Nothofagus cunninghamii	myrtle beech	- Unknown (21598)	01-Jan-1974?	587785,5437829 +/- 100m.							y			
524458	Nothofagus cunninghamii	myrtle beech	Jamie Kirkpatrick (1315)	Jun-1986	587612,5438383 +/- 100m.							y			
29838	Nothofagus cunninghamii	myrtle beech	- Unknown (21598)	01-Dec-1973?	584844,5437677 +/- 100m.							y			
31362	Nothofagus cunninghamii	myrtle beech	- Unknown (21598)	01-Dec-1973?	584368,5435378 +/- 100m.							y			
29512	Nothofagus cunninghamii	myrtle beech	- Unknown (21598)	01-Dec-1973?	585002,5435842 +/- 100m.							y			
31357	Nothofagus cunninghamii	myrtle beech	- Unknown (21598)	01-Jan-1974?	584192,5436408 +/- 100m.							y			
12578	Nothofagus cunninghamii	myrtle beech	Mark Wapstra (1621)	12-Apr-1996?	585962,5433083 +/- 100m.							y			
149049	Nothofagus cunninghamii	myrtle beech	Karen Johnson (1435)	14-Mar-1996?	583262,5439783 +/- 100m.							y			
14359	Nothofagus cunninghamii	myrtle beech	Mark Wapstra (1621)	26-Mar-1996?	583962,5438483 +/- 100m.							y			
148898	Olearia obcordata	heartleaf daisybush	Karen Johnson (1435)	13-Mar-1996?	584212,5440333 +/- 100m.	e					3a				
12917	Olearia persoonioides	geebung daisybush	Mark Wapstra (1621)	26-Mar-1996?	584562,5439983 +/- 100m.	e									
149050	Oreomyrrhis eriopoda	australian caraway	Karen Johnson (1435)	14-Mar-1996?	583262,5439783 +/- 100m.						3a				
263783	Oreomyrrhis sessiliflora	carrot caraway	A. Simson (3720)	05-Feb-1877	581312,5435383 +/- 1000m.	e					3a				
411795	Oxalis magellanica	snowdrop woodsorrel	Jamie Kirkpatrick (1315)	1984	584312,5439683 +/- 100m.						3a				
148718	Ozothamnus hookeri	scaly everlastingbush	Karen Johnson (1435)	13-Mar-1996?	584362,5440083 +/- 100m.	e									
411796	Ozothamnus hookeri	scaly everlastingbush	Jamie Kirkpatrick (1315)	1984	584312,5439683 +/- 100m.	e									
148916	Ozothamnus hookeri	scaly everlastingbush	Karen Johnson (1435)	13-Mar-1996?	584212,5440333 +/- 100m.	e									
411848	Ozothamnus hookeri	scaly everlastingbush	Jamie Kirkpatrick (1315)	1984	585012,5439183 +/- 100m.	e									
409610	Ozothamnus hookeri	scaly everlastingbush	Jamie Kirkpatrick (1315)	1984	584512,5439883 +/- 100m.	e									
929347	Ozothamnus hookeri	scaly everlastingbush	A Simson (2776)	01-Feb-1878	581012,5434890 +/- 2000m.	e									
148902	Ozothamnus hookeri	scaly everlastingbush	Karen Johnson (1435)	14-Mar-1996?	583262,5439783 +/- 100m.	e									
14838	Ozothamnus hookeri	scaly everlastingbush	Mark Wapstra (1621)	26-Mar-1996?	584562,5439983 +/- 100m.	e									

Non-threatened flora of conservation significance within 5000 m

ID	Species	Common Name	Observers	Date	Location	Bio	Sci	RFA	Nat	Int	Res	Pri	Unc	Sen	Cul
524429	Parsonsia brownii	twining silkpod	Jamie Kirkpatrick (1315)	Jun-1986	584912,5437583 +/- 100m.						3a				
524417	Parsonsia brownii	twining silkpod	Jamie Kirkpatrick (1315)	Jun-1986	586812,5434783 +/- 100m.						3a				
243767	Parsonsia brownii	twining silkpod	- Unknown (21598)	01-Jan-1600?	588012,5435283 +/- 2000m.						3a				
929593	Pentachondra pumila	carpet frillyheath	A.M. Buchanan (3758)	24-Nov-2004	583848,5438559 +/- 1000m.						3a				
148917	Pentachondra pumila	carpet frillyheath	Karen Johnson (1435)	13-Mar-1996?	584212,5440333 +/- 100m.						3a				
148903	Pentapogon quadrifidus	five-awned spear-grass	Karen Johnson (1435)	14-Mar-1996?	583262,5439783 +/- 100m.						3a				
409611	Pentapogon quadrifidus	five-awned spear-grass	Jamie Kirkpatrick (1315)	1984	584512,5439883 +/- 100m.						3a				
148904	Persoonia gunnii	gunn's geebung	Karen Johnson (1435)	14-Mar-1996?	583262,5439783 +/- 100m.	e									
148719	Persoonia muelleri var. muelleri	mueller's geebung	Karen Johnson (1435)	13-Mar-1996?	584362,5440083 +/- 100m.	e									
148918	Persoonia muelleri var. muelleri	mueller's geebung	Karen Johnson (1435)	13-Mar-1996?	584212,5440333 +/- 100m.	e									
928911	Phyllocladus aspleniifolius	celerytop pine	A Simson (2776)	19-Nov-1877	582429,5436724 +/- 10000m.	e					3a	y			
12918	Phyllocladus aspleniifolius	celerytop pine	Mark Wapstra (1621)	26-Mar-1996?	584562,5439983 +/- 100m.	e					3a	y			
148886	Phyllocladus aspleniifolius	celerytop pine	Karen Johnson (1435)	13-Mar-1996?	584512,5439933 +/- 100m.	e					3a	y			
148720	Phyllocladus aspleniifolius	celerytop pine	Karen Johnson (1435)	13-Mar-1996?	584362,5440083 +/- 100m.	e					3a	y			
409671	Phyllocladus aspleniifolius	celerytop pine	Jamie Kirkpatrick (1315)	1984	585012,5439183 +/- 100m.	e					3a	y			
929095	Pimelea ligustrina subsp. ligustrina	tall riceflower	A Simson (2776)	02-Nov-1880	587973,5432959 +/- 2000m.						3a				
929048	Pimelea ligustrina subsp. ligustrina	tall riceflower	A Simson (2776)	06-Nov-1879	587973,5432959 +/- 2000m.						3a				
929411	Pimelea ligustrina subsp. ligustrina	tall riceflower	A Simson (2776)	01-Dec-1875	587973,5432959 +/- 2000m.						3a				
148905	Pimelea pauciflora	poison riceflower	Karen Johnson (1435)	14-Mar-1996?	583262,5439783 +/- 100m.						3a				
411868	Plantago paradoxa	hairtuft plantain	Jamie Kirkpatrick (1315)	1984	584412,5438783 +/- 100m.	e									
409624	Plantago paradoxa	hairtuft plantain	Jamie Kirkpatrick (1315)	1984	584312,5439683 +/- 100m.	e									
409612	Plantago paradoxa	hairtuft plantain	Jamie Kirkpatrick (1315)	1984	584512,5439883 +/- 100m.	e									
149051	Plantago paradoxa	hairtuft plantain	Karen Johnson (1435)	14-Mar-1996?	583262,5439783 +/- 100m.	e									
409672	Plantago paradoxa	hairtuft plantain	Jamie Kirkpatrick (1315)	1984	585012,5439183 +/- 100m.	e									
148906	Plantago tasmanica	tasmanian plantain	Karen Johnson (1435)	14-Mar-1996?	583262,5439783 +/- 100m.	e					3a				
929201	Pomaderris elliptica var. diemenica	tasmanian yellow dogwood	A Simson (2776)	01-Oct-1876	587973,5432959 +/- 2000m.	e					3a				
79303	Pteris comans	netted brake	David Ziegeler (7381)	18-Nov-1998?	588212,5437483 +/- 100m.						3a	y			
1057483	Pterostylis scabrida	rough greenhood	L Yeates (1614), Mark Wapstra (1621)	13-Jan-2009	584020,5438640 +/- 100m.	e					3a				

Non-threatened flora of conservation significance within 5000 m

ID	Species	Common Name	Observers	Date	Location	Bio	Sci	RFA	Nat	Int	Res	Pri	Unc	Sen	Cul
149052	Ranunculus nanus	dwarf buttercup	Karen Johnson (1435)	14-Mar-1996?	583262,5439783 +/- 100m.	e									
243456	Richea gunnii	bog candleheath	A. Simson (3720)	01-Jan-1600?	583912,5438683 +/- 20000m.	e					3a				
242241	Richea gunnii	bog candleheath	T.E. Burns (5652)	14-Jun-1959	580512,5437583 +/- 2000m.	e					3a				
929465	Richea gunnii	bog candleheath	A Simson (2776)	01-Apr-1876	581012,5434890 +/- 10000m.	e					3a				
929245	Rorippa gigantea	large yellowcress	A Simson (2776)	01-Nov-1876	587995,5434809 +/- 2000m.						3a				
928856	Rorippa gigantea	large yellowcress	A Simson (2776)	25-Jan-1877	587973,5432959 +/- 2000m.						3a				
242594	Senecio gunnii	mountain fireweed	A. Simson (3720)	1879	583812,5433083 +/- 20000m.						3a				
929169	Simpliglottis gunnii	tall bird-orchid	A Simson (2776)	01-Oct-1876	587995,5434809 +/- 2000m.	e					3a				
264148	Solanum laciniatum	kangaroo apple	A. Simson (3720)	Dec-1875	588012,5433083 +/- 1000m.						3a				
929231	Solanum laciniatum	kangaroo apple	A Simson (2776)	01-Nov-1876	587973,5432959 +/- 2000m.						3a				
929406	Solanum laciniatum	kangaroo apple	A Simson (2776)	01-Dec-1875	587973,5432959 +/- 2000m.						3a				
264149	Solanum laciniatum	kangaroo apple	A. Simson (3720)	01-Dec-1878	588012,5433083 +/- 1000m.						3a				
264150	Solanum laciniatum	kangaroo apple	A. Simson (3720)	Nov-1876	588012,5433083 +/- 1000m.						3a				
148909	Solenogyne gunnii	hairy flat-herb	Karen Johnson (1435)	14-Mar-1996?	583262,5439783 +/- 100m.						3a				
929232	Sphaerolobium minus	eastern globepea	A Simson (2776)	01-Nov-1876	587995,5434809 +/- 2000m.						3a				
12581	Sticherus tener	silky fanfern	Mark Wapstra (1621)	12-Apr-1996?	585962,5433083 +/- 100m.							y			
243013	Tmesipteris obliqua	common forkfern	A. Simson (3720)	Nov-1876	580512,5437583 +/- 2000m.							y			
242242	Tmesipteris obliqua	common forkfern	A. Simson (3720)	1876	580512,5437583 +/- 20000m.							y			
116515	Tmesipteris obliqua	common forkfern	Fred Duncan (7477)	13-Mar-1996?	588412,5436183 +/- 100m.							y			
116464	Tmesipteris obliqua	common forkfern	Fred Duncan (7477)	13-Mar-1996?	588412,5435683 +/- 100m.							y			
116500	Tmesipteris obliqua	common forkfern	Fred Duncan (7477)	13-Mar-1996?	588512,5435683 +/- 100m.							y			
14263	Tmesipteris obliqua	common forkfern	Mark Wapstra (1621)	25-Mar-1996?	588562,5435933 +/- 100m.							y			
514843	Tmesipteris obliqua	common forkfern	Jamie Kirkpatrick (1315)	Jun-1986	584912,5437583 +/- 100m.							y			
77345	Tmesipteris obliqua	common forkfern	David Ziegeler (7381)	18-Nov-1998?	588212,5437783 +/- 100m.							y			
116507	Tmesipteris obliqua	common forkfern	Fred Duncan (7477)	13-Mar-1996?	588312,5435883 +/- 100m.							y			
524473	Tmesipteris obliqua	common forkfern	Jamie Kirkpatrick (1315)	Jun-1986	587612,5438383 +/- 100m.							y			
77403	Tmesipteris obliqua	common forkfern	David Ziegeler (7381)	18-Nov-1998?	588212,5437483 +/- 100m.							y			
77394	Tmesipteris obliqua	common forkfern	David Ziegeler (7381)	18-Nov-1998?	587912,5437483 +/- 100m.							y			
262982	Todea barbara	austral kingfern	A. Simson (3720)	Aug-1876	588112,5435283 +/- 1000m.						3a	y			
524474	Townsonia viridis	beech orchid	Jamie Kirkpatrick (1315)	Jun-1986	587612,5438383 +/- 100m.	t									
148888	Uncinia tenella	delicate hooksedge	Karen Johnson (1435)	13-Mar-1996?	584512,5439933 +/- 100m.						3a				
149055	Veronica calycina	hairy speedwell	Karen Johnson (1435)	14-Mar-1996?	583262,5439783 +/- 100m.						3a				
243781	Veronica calycina	hairy speedwell	- Unknown (21598)	01-Jan-1600?	588012,5435283 +/- 2000m.						3a				

Non-threatened flora of conservation significance within 5000 m

ID	Species	Common Name	Observers	Date	Location	Bio	Sci	RFA	Nat	Int	Res	Pri	Unc	Sen	Cul
243408	Veronica calycina	hairy speedwell	- Unknown (21598)	1933	583812,5433083 +/- 20000m.						3a				
262942	Veronica calycina	hairy speedwell	A. Simson (3720)	Nov-1875	588012,5433083 +/- 1000m.						3a				
242861	Veronica calycina	hairy speedwell	- Unknown (21598)	14-Dec-1877	584712,5437583 +/- 2000m.						3a				

For more information about flora and fauna species, please contact the Manager, Biodiversity Conservation Branch.

Telephone: (03) 6233 6556

Email: NatureConservation.Enquiries@dpipwe.tas.gov.au

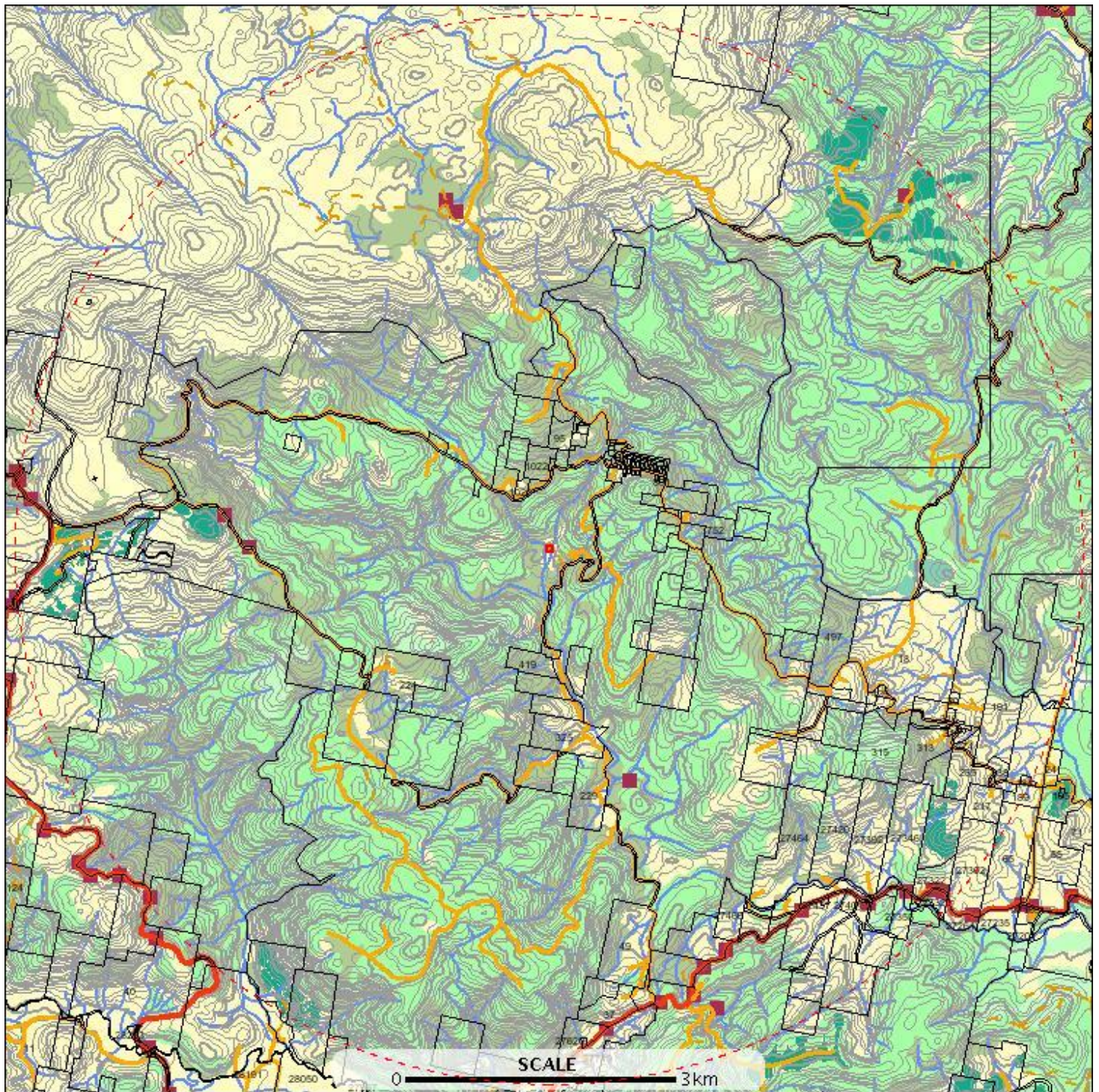
Non-threatened fauna of conservation significance within 500 m

*** No non-threatened fauna of conservation significance found within 500 metres. ***

Non-threatened fauna of conservation significance within 5000 m

E: 579873
N: 5440519

E: 590072
N: 5440519



E: 579873
N: 5430319

E: 590072
N: 5430319

Non-threatened fauna of conservation significance within 5000 m



Non-threatened fauna of conservation significance within 5000 m

ID	Species	Common Name	Observers	Date	Location	Bio	Sci	RFA	Nat	Int	Res	Pri	Unc	Sen	Cul
304629	Crinia tasmaniensis	tasmanian froglet	Darryel Binns (6900)	11-Sep-1993?	584112,5438583 +/- 1000m.	e									
307195	Crinia tasmaniensis	tasmanian froglet	Darryel Binns (6900)	06-Nov-1992?	584012,5438683 +/- 1000m.	e									
749214	Isodon obesulus subsp. affinis	southern brown bandicoot	Greg Hocking (7572)	08-Sep-1986	586430,5431504 +/- 1298m.	e									
749217	Isodon obesulus subsp. affinis	southern brown bandicoot	Greg Hocking (7572)	11-Sep-1992	587969,5432111 +/- 1617m.	e									
741870	Macropus rufogriseus subsp. rufogriseus	red-necked wallaby	Greg Hocking (7572)	11-Sep-1992	581241,5432158 +/- 1617m.	e									
749218	Macropus rufogriseus subsp. rufogriseus	red-necked wallaby	Greg Hocking (7572)	24-Oct-1991	588325,5432222 +/- 101m.	e									
741861	Macropus rufogriseus subsp. rufogriseus	red-necked wallaby	Greg Hocking (7572)	30-Jul-1992	580113,5435894 +/- 478m.	e									
893443	Macropus rufogriseus subsp. rufogriseus	red-necked wallaby	D Randal (6198)	01-Aug-1973?	588313,5438737 +/- 18500m.	e									
1154869	Pseudomys higginsii	long-tailed mouse	Erin Flynn (19574)	09-Oct-2008	585726,5433251 +/- 0m.	e									
1154879	Pseudomys higginsii	long-tailed mouse	Erin Flynn (19574)	23-Oct-2008	582167,5435433 +/- 0m.	e									
886020	Tachyglossus aculeatus subsp. setosus	short-beaked echidna	Darryel Binns (6900)	02-Feb-1995?	586012,5431183 +/- 100m.	e									
749158	Thylogale billardieri	tasmanian pademelon	Greg Hocking (7572)	30-Jul-1992	580113,5435894 +/- 478m.	eax									
741862	Thylogale billardieri	tasmanian pademelon	Greg Hocking (7572)	26-May-1986	580113,5435894 +/- 100m.	eax									
749210	Thylogale billardieri	tasmanian pademelon	Greg Hocking (7572)	25-Apr-1985	585509,5430928 +/- 1174m.	eax									
741920	Thylogale billardieri	tasmanian pademelon	Greg Hocking (7572)	24-Oct-1991	588325,5432222 +/- 101m.	eax									
741918	Thylogale billardieri	tasmanian pademelon	Greg Hocking (7572)	25-Apr-1985	587337,5432045 +/- 1174m.	eax									
741922	Thylogale billardieri	tasmanian pademelon	Greg Hocking (7572)	16-Apr-1993	588577,5432225 +/- 521m.	eax									
998785	Thylogale billardieri	tasmanian pademelon	Janey Jackson (11933)	23-Mar-1996	586554,5431124 +/- 500m.	eax									
1154880	Thylogale billardieri	tasmanian pademelon	Erin Flynn (19574)	24-Oct-2008	581930,5435745 +/- 0m.	eax									
749215	Thylogale billardieri	tasmanian pademelon	Greg Hocking (7572)	25-Apr-1985	586430,5431504 +/- 1174m.	eax									
741886	Thylogale billardieri	tasmanian pademelon	Greg Hocking (7572)	11-Sep-1992	581241,5432158 +/- 1617m.	eax									
741917	Trichosurus vulpecula subsp. fuliginosus	common brushtail possum	Greg Hocking (7572)	26-Jan-1993	586328,5431243 +/- 305m.	e									
749159	Trichosurus vulpecula subsp. fuliginosus	common brushtail possum	Greg Hocking (7572)	30-Jul-1992	580113,5435894 +/- 478m.	e									
741887	Trichosurus vulpecula subsp. fuliginosus	common brushtail possum	Greg Hocking (7572)	11-Sep-1992	581241,5432158 +/- 1617m.	e									
741923	Trichosurus vulpecula subsp. fuliginosus	common brushtail possum	Greg Hocking (7572)	08-Sep-1986	588670,5432217 +/- 886m.	e									
741921	Trichosurus vulpecula subsp. fuliginosus	common brushtail possum	Greg Hocking (7572)	24-Oct-1991	588325,5432222 +/- 101m.	e									

Non-threatened fauna of conservation significance within 5000 m

ID	Species	Common Name	Observers	Date	Location	Bio	Sci	RFA	Nat	Int	Res	Pri	Unc	Sen	Cul
749233	Trichosurus vulpecula subsp. fuliginosus	common brushtail possum	Greg Hocking (7572)	16-Apr-1993	588577,5432225 +/- 521m.	e									
749216	Trichosurus vulpecula subsp. fuliginosus	common brushtail possum	Greg Hocking (7572)	18-Jan-1988	586632,5431676 +/- 1418m.	e									
749211	Trichosurus vulpecula subsp. fuliginosus	common brushtail possum	Greg Hocking (7572)	25-Apr-1985	585509,5430928 +/- 1174m.	e									

For more information about flora and fauna species, please contact the Manager, Biodiversity Conservation Branch.

Telephone: (03) 6233 6556

Email: NatureConservation.Enquiries@dpipwe.tas.gov.au

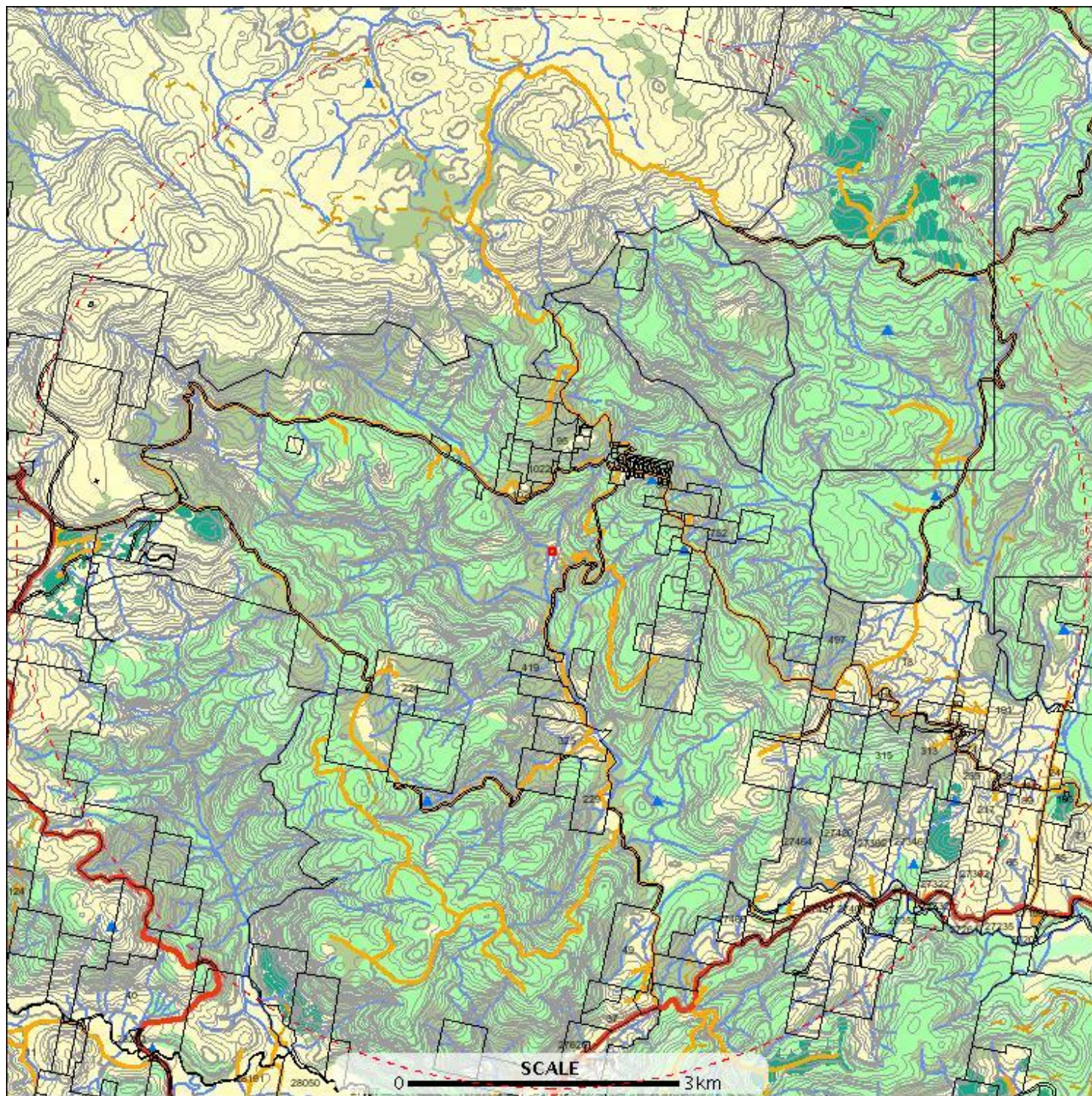
Weeds within 500 m

*** No weeds found within 500 metres. ***

Weeds within 5000 m

E: 579873
N: 5440519

E: 590072
N: 5440519



E: 579873
N: 5430319

E: 590072
N: 5430319

Weeds within 5000 m

	Weeds Watchlist		Low Native Eucalypt Forest		Access Road
	Place Names		Non-Forest		Forestry
	Relief Names		Contours		Vehicular Track
	Major Rivers		Index		Cadastral Parcels
	Other Rivers		Intermediate		
	Water Body		Depression Index		
	Estuaries		Depression Intermediate		
	Sea		Land		
	Forest Groups		Road Centrelines		
	Hardwood Plantation		National/State Highway		
	Softwood Plantation		Major Arterial Road		
	Other Native Forest		Arterial Road		
	Tall Native Eucalypt Forest		Feeder		
(cont)		(cont)			

Weeds within 5000 m

ID	Species	Common Name	Observers	Date	Geometry	Location	Obs State	WMA	Wons Density	Data Source
243783	Cotoneaster franchetii	grey cotoneaster	Andrew Rozefelds (2777)	03-Jun-1997	588112,5437483 +/- 100m.	West Tamar Highway, north of junction with Batman Highway	Present	Yes		
77331	Digitalis purpurea	foxglove	David Ziegeler (7381)	18-Nov-1998?	588912,5437983 +/- 100m.		Present	Yes		
148876	Digitalis purpurea	foxglove	Karen Johnson (1435)	14-Mar-1996?	583262,5439783 +/- 100m.		Present	Yes		
912244	Erica lusitanica	spanish heath	C Williams (6064), T Dudley (6065)	26-Feb-1997	585073,5430455 +/- 100m.		Present	Yes		
912245	Erica lusitanica	spanish heath	C Williams (6064), T Dudley (6065)	26-Feb-1997	585145,5430574 +/- 100m.		Present	Yes		
243407	Leucanthemum vulgare	oxeye daisy	A. Simson (3720)	1879	583812,5433083 +/- 20000m.	Thomas Plains	Present	Yes		
911086	Leycesteria formosa	himalayan honeysuckle	Tim Rudman (2416)	13-Jan-2000	588352,5432193 +/- 50m.		Present	Yes		
911862	Rosa rubiginosa	sweet briar	Tim Rudman (2416)	13-Jan-2000	588352,5432193 +/- 50m.		Present	Yes		
12439	Rubus fruticosus	blackberry	Mark Wapstra (1621)	26-Mar-1996?	586212,5435433 +/- 100m.		Present	Yes		
77335	Rubus fruticosus	blackberry	David Ziegeler (7381)	18-Nov-1998?	588912,5437983 +/- 100m.		Present	Yes		
12410	Rubus fruticosus	blackberry	Mark Wapstra (1621)	26-Mar-1996?	585912,5436083 +/- 100m.		Present	Yes		
12356	Rubus fruticosus	blackberry	Mark Wapstra (1621)	25-Mar-1996?	589762,5434683 +/- 100m.		Present	Yes		
12580	Rubus fruticosus	blackberry	Mark Wapstra (1621)	12-Apr-1996?	585962,5433083 +/- 100m.		Present	Yes		
14261	Rubus fruticosus	blackberry	Mark Wapstra (1621)	25-Mar-1996?	588562,5435933 +/- 100m.		Present	Yes		
1165901	Ulex europaeus	gorse	- Unknown (21598)	22-Jan-2003	588355.452,5432492.1 275 +/- -1m.		Present	Yes	7	DPIPWE
1165815	Ulex europaeus	gorse	- Unknown (21598)	01-Jan-2001	588738.439,5433080.1 329 +/- -1m.		Present	Yes	7	DPIPWE

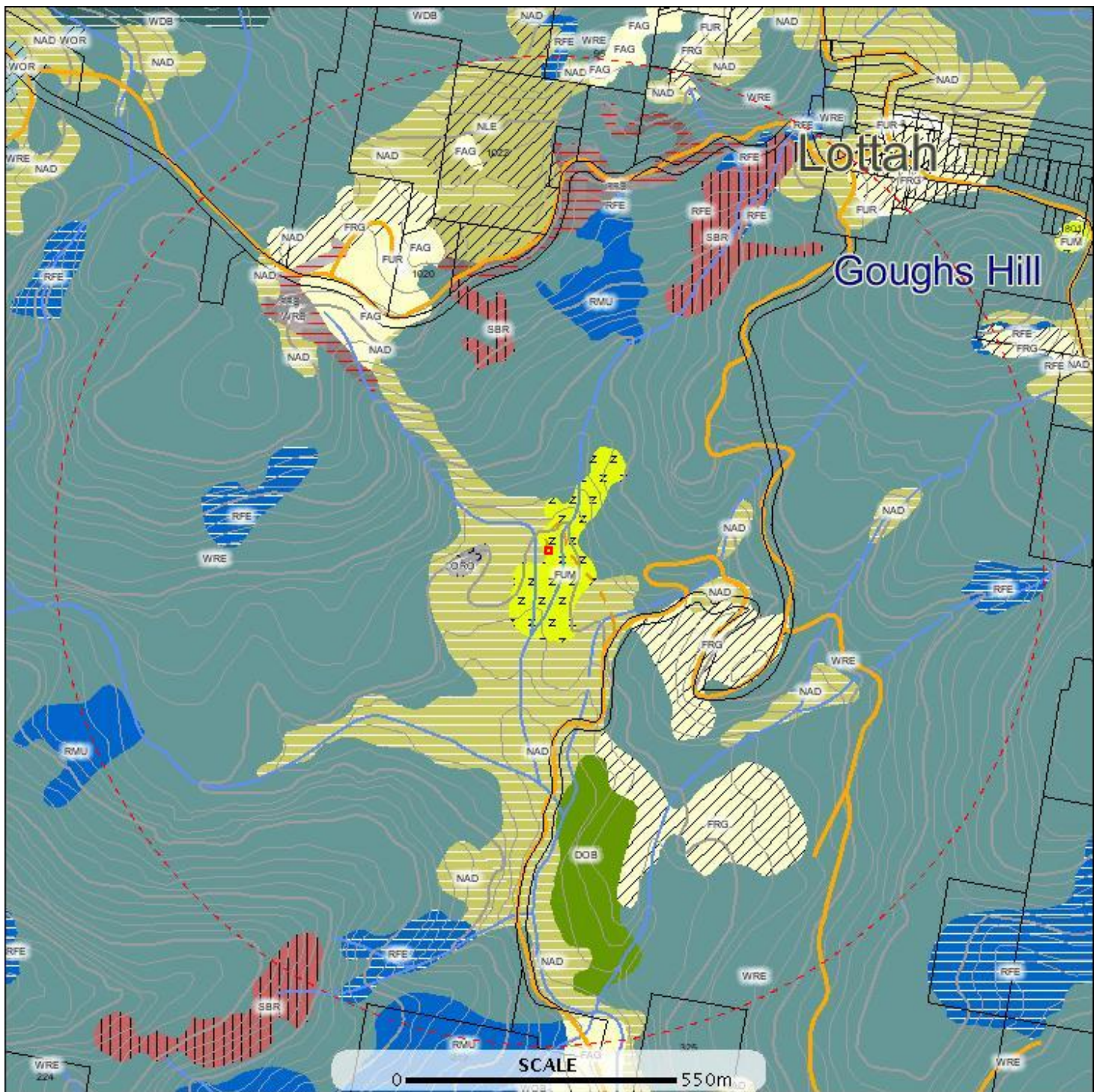
For more information about introduced weed species, please visit the following URL for contact details in your area.

<http://www.dpiw.tas.gov.au/inter.nsf/WebPages/TPRY-52J8Z3?open>

TASVEG communities within 1000 metres

E: 583872
N: 5436519

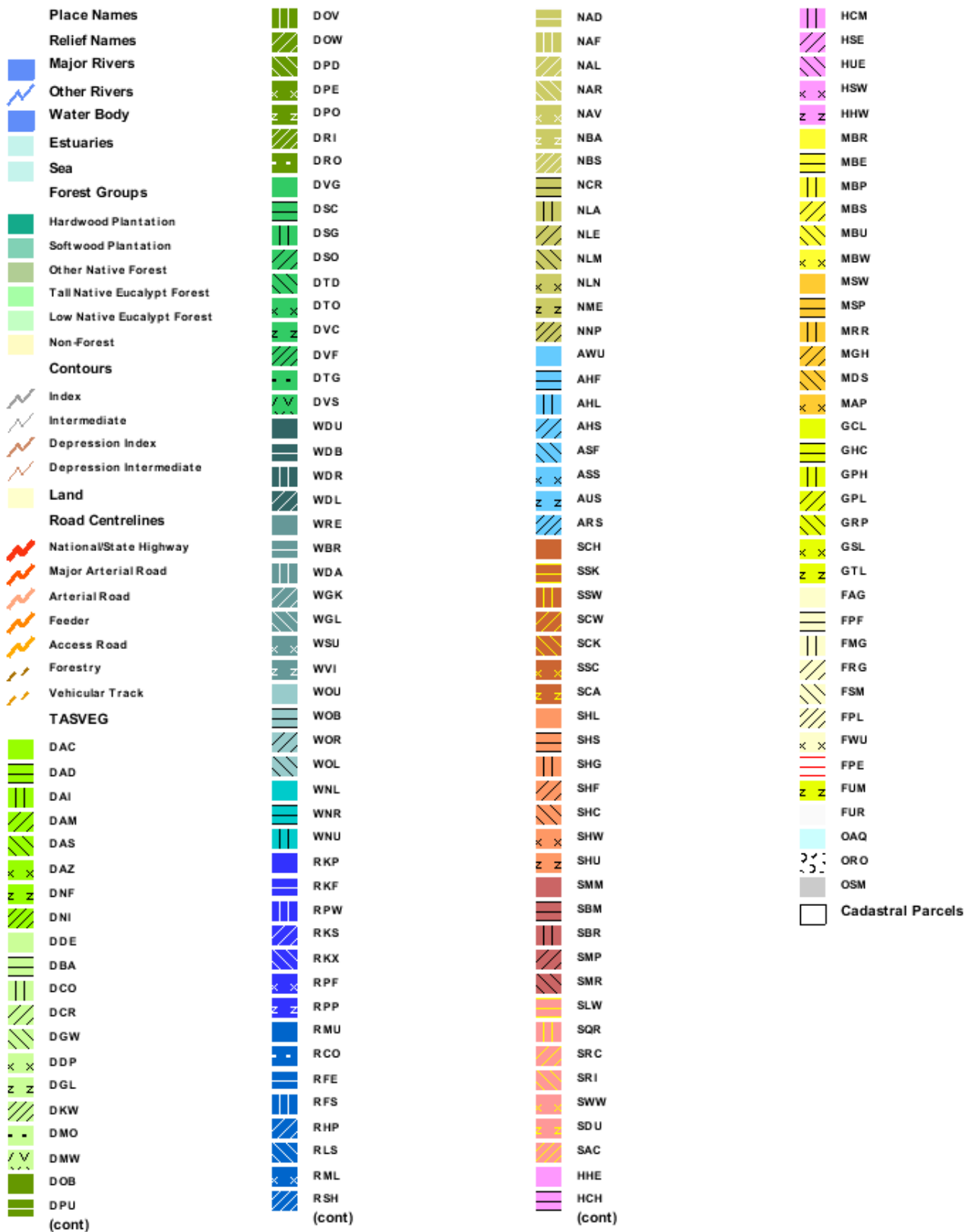
E: 586073
N: 5436519



E: 583872
N: 5434319

E: 586073
N: 5434319

TASVEG communities within 1000 metres



TASVEG communities within 1000 metres

ID	Code	Community	Emergent Species
101521346	WOU	Eucalyptus obliqua wet forest (undifferentiated)	
101527594	FUM	Extra-urban miscellaneous	
101527609	WOU	Eucalyptus obliqua wet forest (undifferentiated)	
101527608	FUR	Urban areas	
101527597	NAD	Acacia dealbata forest	
101532289	DOB	Eucalyptus obliqua dry forest and woodland	
101532287	FAG	Agricultural land	
101527593	NAD	Acacia dealbata forest	
101527595	NAD	Acacia dealbata forest	
101527598	NAD	Acacia dealbata forest	
101527365	NAD	Acacia dealbata forest	

For more information about TASVEG maps, please contact the Coordinator, Tasmanian Vegetation Monitoring and Mapping Program.

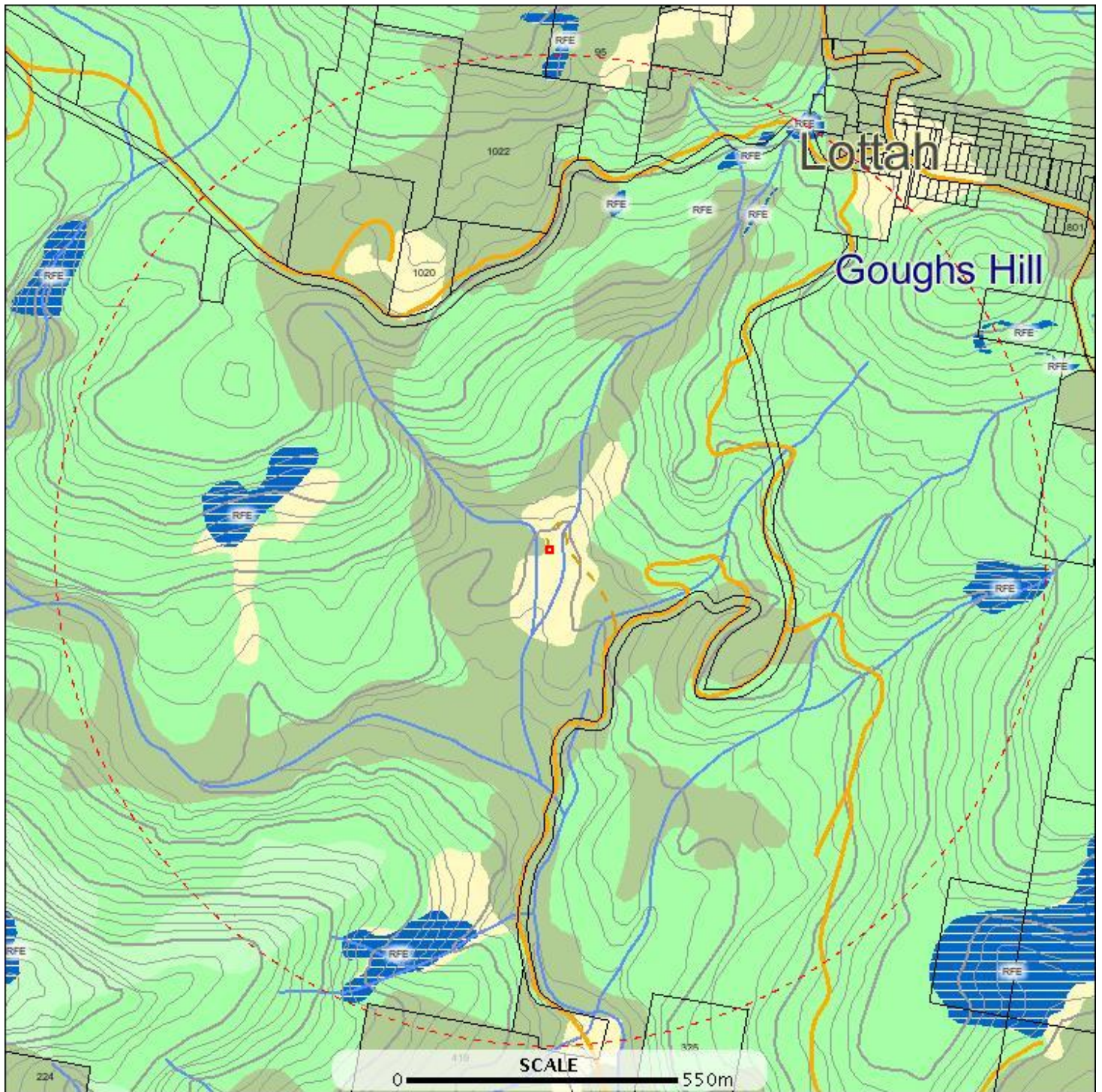
Telephone: (03) 6233 4501

Email: TASVEG@dpipwe.tas.gov.au

Threatened communities within 1000 metres

E: 583872
N: 5436519

E: 586073
N: 5436519



E: 583872
N: 5434319

E: 586073
N: 5434319

Threatened communities within 1000 metres

Place Names	 Tall Native Eucalypt Forest	 Feeder
Relief Names	 Low Native Eucalypt Forest	 Access Road
Threatened Communities	 Non-Forest	 Forestry
 DAC	Contours	 Vehicular Track
 Major Rivers	 Index	 Cadastral Parcels
 Other Rivers	 Intermediate	
 Water Body	 Depression Index	
 Estuaries	 Depression Intermediate	
 Sea	 Land	
Forest Groups	Road Centrelines	
 Hardwood Plantation	 National/State Highway	
 Softwood Plantation	 Major Arterial Road	
 Other Native Forest	 Arterial Road	
(cont)	(cont)	

Threatened communities within 1000 metres

Code	Title	Status
RFE	Rainforest fernland	R
RFE	Rainforest fernland	R
RFE	Rainforest fernland	R
RFE	Rainforest fernland	R
RFE	Rainforest fernland	R
RFE	Rainforest fernland	R

For more information about threatened vegetation communities, please contact Resource Management and Conservation.

Ph: (03) 6233 4501,

Fax: (03) 6233 3186

Address: 4th Floor 134 Maquarie Street Hobart TAS 7000 Australia

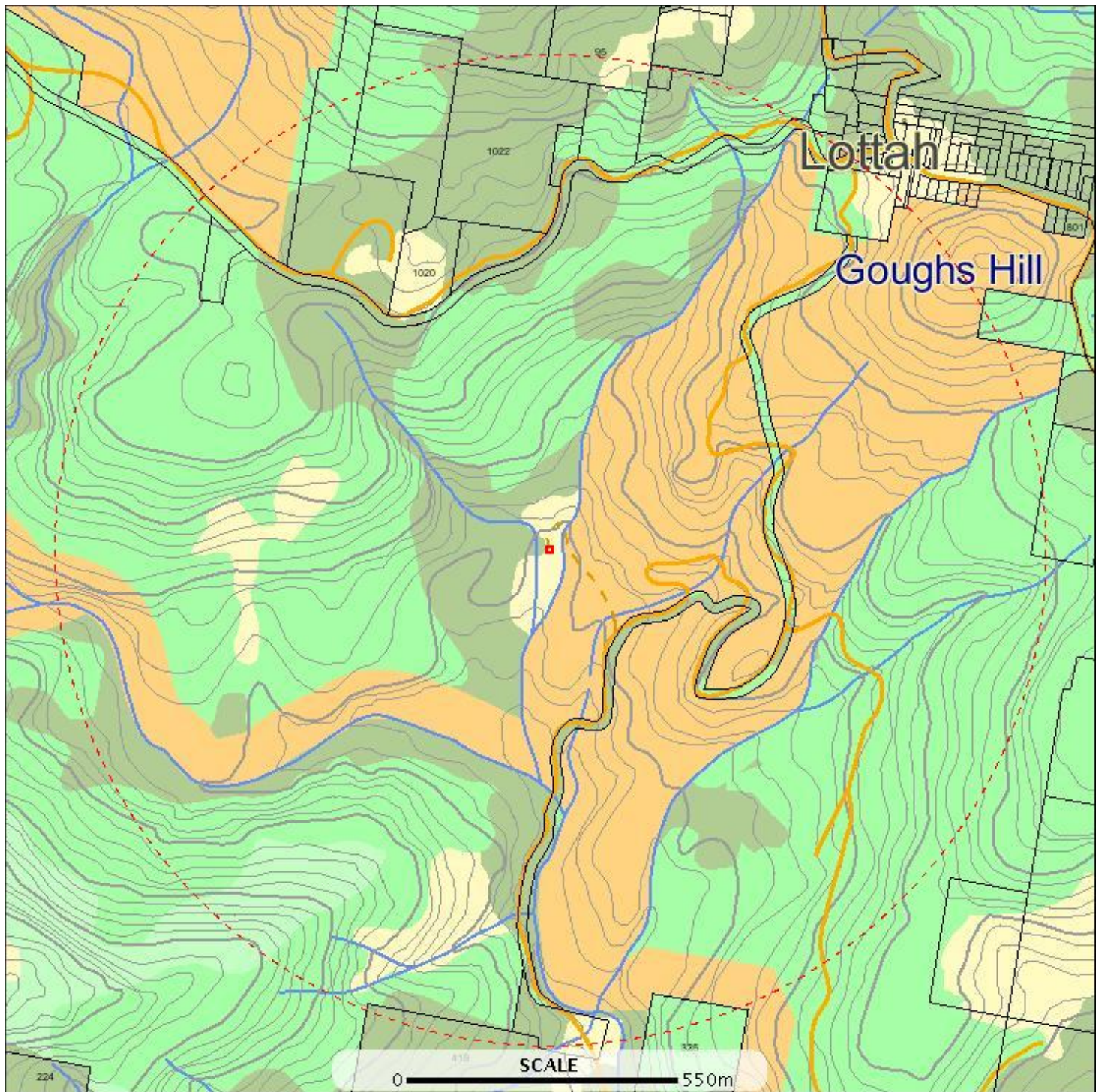
Geoconservation sites within 1000 metres

*** No Geoconservation sites found within 1000 metres. ***

Reserve estates within 1000 metres

E: 583872
N: 5436519

E: 586073
N: 5436519



E: 583872
N: 5434319

E: 586073
N: 5434319

Reserve estates within 1000 metres



Reserve estates within 1000 metres

Name	Classification	Status
	Informal Reserve on State Forest or Forestry Tas managed land	Informal Reserve
	Informal Reserve on State Forest or Forestry Tas managed land	Informal Reserve
	Informal reserve on other public land	Informal Reserve

For more information about the Tasmanian Reserve Estate, please contact the Policy & Conservation Assessment Branch DPIPW.

Ph: (03) 6216 4457

Fax (03) 6223 8603

Address: GPO Box 44 Hobart TAS 7000